


CASE REPORT

Open Access



Renal thrombotic microangiopathy and nephrotic proteinuria induced by intravitreal injection of aflibercept for diabetic macular edema

Yawara Kikuchi^{1†}, Yoshimi Odashima^{2†}, Kazuhiro Yoshikawa^{1*} , Tomoyasu Oda², Fumitaka Tanaka¹, Hiroki Oikawa³, Yasushi Ishigaki² and Koichi Asahi¹

Abstract

Background: Vascular endothelial growth factor inhibitors (VEGFIs) are used to treat malignant neoplasms and ocular diseases by inhibiting angiogenesis. Systemic use of VEGFIs has various side effects, including hypertension, proteinuria, and thrombotic microangiopathy, but adverse events due to intravitreal injection of VEGFIs have not been fully clarified. Although age-related macular degeneration was initially the most common target of intravitreal injection of VEGFIs, it has also been applied sporadically for diabetic macular edema in recent years. Proteinuria following intravitreal injection of VEGFIs would be reversible. In patients with diabetes mellitus (DM), however, it would be difficult to determine whether kidney damage arises from the clinical course of DM or from intravitreal injection of VEGFIs for diabetic macular edema.

Case presentation: A 55-year-old woman with a 20-year history of type 2 DM began intravitreal injection of VEGFI (aflibercept, 2 mg every 4 weeks) for treatment of diabetic macular edema 2 years previously. She presented with leg edema, hypertension, and nephrotic-range proteinuria 14 months after the first injection. Histological examination of renal biopsy specimens revealed diabetic nephropathy with renal thrombotic microangiopathy probably associated with intravitreal injection of VEGFI. The patient's nephrotic syndrome completely improved at 6 months after simply discontinuing aflibercept.

Conclusions: This is a precious report of pathologically investigated renal thrombotic microangiopathy leading to nephrotic syndrome due to intravitreal injection of aflibercept for diabetic macular edema in a patient with type 2 DM. Renal function and proteinuria should be monitored in diabetic patients who receive intravitreal injection of a VEGFI. If kidney damage develops independent of the clinical course of DM during intravitreal injection of a VEGFI, renal biopsy should be performed and intravitreal VEGFI injection discontinued.

[†]Yawara Kikuchi and Yoshimi Odashima contributed equally to this work.

*Correspondence: yoshikaw@iwate-med.ac.jp

¹ Division of Nephrology and Hypertension, Department of Internal Medicine, Iwate Medical University School of Medicine, Iwate, Japan
Full list of author information is available at the end of the article



© The Author(s) 2022, corrected publication 2022. **Open Access** This article is licensed under a Creative Commons Attribution 4.0 International License, which permits use, sharing, adaptation, distribution and reproduction in any medium or format, as long as you give appropriate credit to the original author(s) and the source, provide a link to the Creative Commons licence, and indicate if changes were made. The images or other third party material in this article are included in the article's Creative Commons licence, unless indicated otherwise in a credit line to the material. If material is not included in the article's Creative Commons licence and your intended use is not permitted by statutory regulation or exceeds the permitted use, you will need to obtain permission directly from the copyright holder. To view a copy of this licence, visit <http://creativecommons.org/licenses/by/4.0/>. The Creative Commons Public Domain Dedication waiver (<http://creativecommons.org/publicdomain/zero/1.0/>) applies to the data made available in this article, unless otherwise stated in a credit line to the data.

Keywords: Intravitreal injections, Thrombotic microangiopathy, Vascular endothelial growth factor inhibitor, Aflibercept, Diabetic macular edema, Diabetic nephropathy

Background

Vascular endothelial growth factor inhibitors (VEGFIs) are used to treat malignant neoplasms and ocular diseases by inhibiting angiogenesis. Systemic use of VEGFIs is associated with various side effects, including hypertension, proteinuria, and thrombotic microangiopathy (TMA) [1–3]. In addition to promoting angiogenesis, vascular endothelial growth factor (VEGF) also maintains the morphology and function of vascular endothelial cells [1–3]. Therefore, blockade of VEGF signaling may also cause damage to glomerular vascular endothelial cells [1–3], leading to renal TMA.

VEGF levels are significantly increased in the eyeballs of patients with diabetic retinal angiopathy, which in turn promotes angiogenesis [4]. Therefore, intravitreal injection of VEGFIs is also used to inhibit VEGF signaling and prevent neoangiogenesis in those patients [4]. The intravitreal dose of VEGFI for the treatment of diabetic retinal vasculopathy is approximately 100- to 200-fold lower than the systemic dose used in the treatment of malignant neoplasms [1, 2].

Here, we report a case of nephrotic syndrome due to renal TMA that developed despite intravitreal injection of a VEGFI (aflibercept) in a female patient with diabetic macular edema (DME). Her nephrotic syndrome improved at 6 months after aflibercept discontinuation.

Case presentation

A 55-year-old woman with a 20-year history of type 2 diabetes mellitus (DM) was treated with basal-bolus insulin and oral hypoglycemic agents. She sometimes interrupted diabetic treatment, resulting in remaining high hemoglobin A_{1c} (10%–14%) throughout her clinical course. She started intravitreal injection of aflibercept (2 mg every 4 weeks) for the treatment of DME 2 years previously. At initiation of aflibercept, her serum creatinine was 0.54 mg/dL and urinalysis showed no abnormalities. In 1- or 2-monthly monitoring of urinalysis, mild proteinuria (1+) was found at 5 months after the first injection, but the injections were continued. Fourteen months after the first injection, she reported bilateral leg edema and hypertension (159/87 mm Hg) with a urine protein level of 4.9 g/gCr, urine red blood cells of 0–1/high-power field, and serum creatinine of 0.65 mg/dL; thus, amlodipine, telmisartan, and furosemide were added to the therapy. Nevertheless, urine protein continued to increase, to 10.0 g/gCr at 2 years after the first

injection, and she was referred to our division for treatment of nephrotic-range proteinuria. A total dose of 44 mg of aflibercept was administered in 22 injections during the 2 years following the first injection, which halted the deterioration in eyesight. At the time of visiting our division, her other prescription medications included nifedipine, doxazosin mesylate, trichlormethiazide, spironolactone, rosuvastatin calcium, insulin glulisine, and insulin glargine. She had no family history of kidney disease or TMA.

The patient's height was 155 cm, weight 64.3 kg, blood pressure 168/87 mm Hg, pulse 81/min, O₂ saturation 96% with room air, body temperature 37.4°C, and bilateral leg edema was noted. Computed tomography showed bilateral pleural and peritoneal effusions, but the kidneys were of normal size. Laboratory data revealed the following: white blood cell count, $4.59 \times 10^3/\mu\text{L}$; hemoglobin, 8.2 g/dL; platelet count, $21.3 \times 10^4/\mu\text{L}$; urine protein, 12.0 g/gCr; urine red blood cells, 10–19/high-power field; serum creatinine, 1.20 mg/dL; estimated glomerular filtration rate (using the 2021 CKD-EPI creatinine equation), 53.5 mL/min/1.73m²; serum albumin, 2.3 g/dL; hemoglobin A_{1c}, 8.0%. No abnormalities were observed in IgG, IgA, IgM, C3, C4 levels, or autoantibodies. She had severe grade diabetic complication, such as proliferative diabetic retinopathy and diabetic neuropathy.

Two renal biopsy specimens were obtained for histological examination. There were 32 glomeruli in the light microscopic specimens, five of which were globally sclerotic. Glomeruli showed diffuse increase of mesangial matrix with nodular lesions (Fig. 1a). Mesangiolysis (Fig. 1b, arrow), duplication of the glomerular capillary wall (Fig. 1a, arrows), and expansion of the subendothelial spaces (Fig. 1a, arrowhead) were also present in the glomeruli. There were no definite thrombi in the glomeruli. Interstitial fibrosis, interstitial inflammation, and tubular atrophy were mild. Arterial sclerosis was mild, and arteriolar hyalinosis was moderate. No narrowing of the lumen or thrombosis were observed in the interstitial arterioles. Immunofluorescence studies showed linear IgG staining along the glomerular capillary walls (Fig. 1c; IgG 1+, intensity) and negative staining for IgA, IgM, C3, and C1q. Electron microscopy revealed diffuse thickening of the glomerular basement membrane (GBM) and increased deposition of mesangial matrix in the glomeruli. Mesangiolysis, duplication of the GBM, and expansion of the subendothelial spaces were also seen (data not shown). Some expanded subendothelial spaces contained

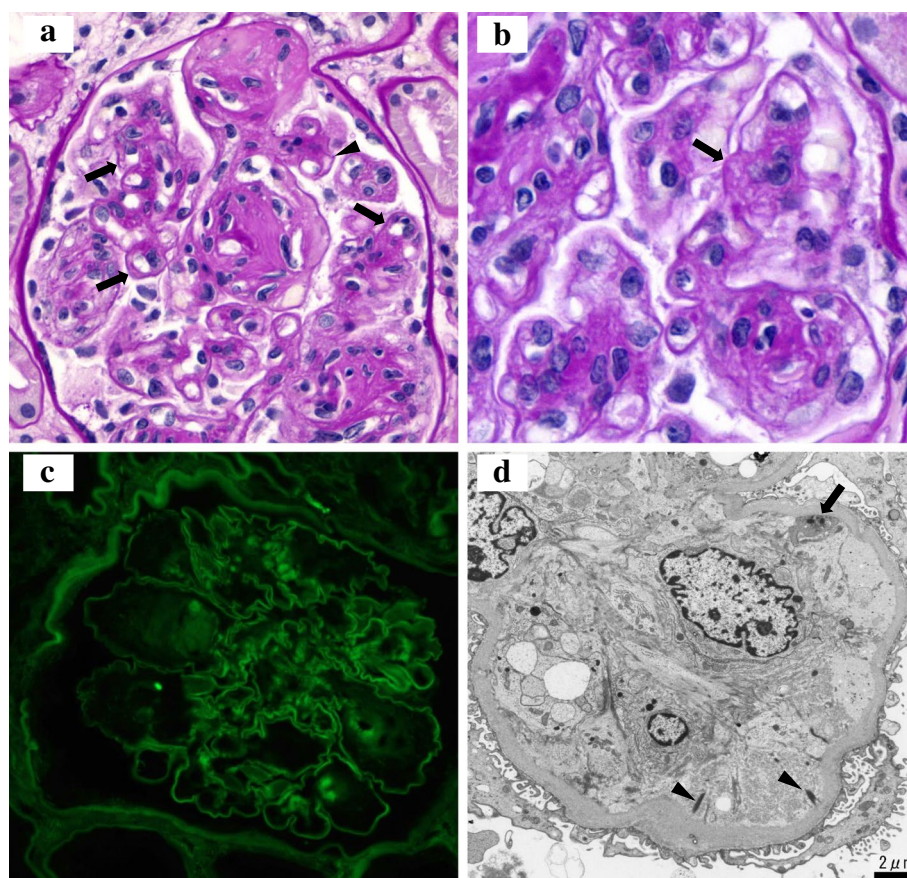


Fig. 1 Renal biopsy findings. **a** A light microscopy showing a glomerulus with nodular lesions, duplication of the glomerular capillary wall (arrows) and expansion of the subendothelial space (arrowhead) (periodic acid-Schiff stain, original magnification $\times 500$). **b** Mesangiolysis (arrow) in the glomerulus (periodic acid-Schiff stain, original magnification $\times 800$). **c** Immunofluorescence staining for IgG showing linear pattern along the glomerular capillary walls (original magnification $\times 400$). **d** Electron microscopy showing expansion of the subendothelial space with fibrin tactoids (arrowheads) and platelet (arrow) (original magnification $\times 4000$)

fibrin tactoids (Fig. 1d, arrowheads) and platelets (Fig. 1d, arrow). There were no electron-dense deposits in the glomeruli and some endothelial swellings were observed in the interstitial arterioles. Collectively, these findings suggested a final diagnosis of diabetic nephropathy with renal TMA probably associated with VEGFI (aflibercept).

Intravitreal aflibercept injection was discontinued after the renal biopsy, then both urinary protein and serum albumin gradually improved. Six months after withdrawal of aflibercept, the patient no longer had nephrotic syndrome as indicated by improvement of leg edema and disappearance both of the bilateral pleural effusion and ascites. Ten months after ceasing aflibercept, her laboratory parameters (serum creatinine, 1.49 mg/dL; serum albumin, 4.0 g/dL; urine protein, 0.6 g/gCr) and blood pressure (123/54 mm Hg) had improved. Her eyesight maintained stable even after aflibercept discontinuation.

Discussion and conclusions

In animal studies, VEGFI binding was detected in the glomeruli of monkeys after intravitreal injection of VEGFI [5]. Although experimental studies did not demonstrate a significant association between intravitreal injection of VEGFIs and renal dysfunction or proteinuria [6–9], some clinical studies suggesting an association between VEGFIs and renal dysfunction or proteinuria are beginning to appear [10, 11]. Hypertension has not been clearly demonstrated as a side effect of intravitreal injection of VEGFIs; however, there has been a recent increase in positive clinical studies reporting a relationship between them [6, 7, 12–15]. The associations of intravitreal injection of VEGFIs with increased risk of cerebrovascular events and mortality have also been controversial [16–20]. Therefore, adverse events due to intravitreal injection of VEGFIs have yet to be fully clarified.

In 2011, Pellé et al. first reported the pathology of renal biopsy (renal TMA) after intravitreal injection of VEGFI [21]. To date, 18 renal biopsies have been reported following intravitreal injection of VEGFIs (Table 1) [21–34]. In Japan, ranibizumab and aflibercept are used as intravitreal VEGFIs for age-related macular degeneration (AMD) and DME. Intravitreal injection of bevacizumab is also performed as an off-label use. AMD was initially the most common disease targeted by intravitreal injection of VEGFI, and its additional application for DME has been sporadic in recent years. We found more reports of renal biopsy after the use of intravitreal bevacizumab than those of ranibizumab and aflibercept, which may suggest that intravitreal bevacizumab has higher potency, longer half-time, and stronger systemic absorption [35, 36]. The treatment burden of patients with DME has been heavy with increasing number of diabetic patients [37], and the use of VEGFI for DME is also possibly increasing. Renal TMA was the most common renal pathology among the 18 renal biopsies, being reported in 9/18 patients (Nos. 1, 4, 9, 10, and 14–18 in Table 1) [21, 23, 28, 29, 32–34]. Of these, only three patients showed improvement after discontinuation of intravitreal injection of VEGFI for AMD or glaucoma (Nos. 1, 9 and 18 in Table 1) [21, 28, 34]. In our case, renal TMA developed due to intravitreal aflibercept injection for DME—not for AMD or glaucoma—and the condition improved after simply discontinuing intravitreal injection of aflibercept, without the use of corticosteroids or other drugs.

The glomerular changes in the present case are consistent pathologically with diabetic nephropathy (class III); however, considering the doubling of the glomerular capillary wall (basement membrane) and expansion of the subendothelial space, the morphological findings are also compatible with renal TMA [38]. In fact, the improvement of proteinuria after discontinuing intravitreal aflibercept suggests that the primary cause of proteinuria was renal TMA due to intravitreal aflibercept rather than coexisted diabetic nephropathy.

There have been reports of TMA improvement after discontinuing of intravitreal injection of VEGFI for AMD and glaucoma [21, 28, 34]. To the best of our knowledge, this is a precious report of renal TMA that developed due to intravitreal injection of aflibercept for DME in a patient with type 2 DM, which improved simply by discontinuing aflibercept, without the use of corticosteroids or other drugs.

Additionally, there have been several reports of the occurrence of clinical symptoms after the initiation of intravitreal injections of VEGFI, although histopathological examinations of renal biopsy specimens were not performed [1, 2]. The most common condition was worsening eGFR, others were proteinuria, hypertension,

hypertensive cerebral hemorrhage, and relapsed minimal change disease [1, 2, 26, 30].

Kidney damage associated with DM is often irreversible [39]. However, proteinuria due to intravitreal injection of VEGFI may be reversible. In patients with a long history of DM, it would be difficult to determine whether the kidney damage is due to DM or intravitreal injection of VEGFI in the clinical course. If kidney damage develops after starting intravitreal injection of VEGFI, we recommend performing histopathological examination of renal biopsy and discontinuing VEGFI immediately.

This patient had no familial history of TMA and did not present clinical features or autoantibodies suggesting autoimmune disease. VEGFI-induced renal TMA rarely develops the classical hematologic abnormalities found in acute general TMA [40]. Our report is, however, limited by not confirming serum aflibercept level, serum VEGF level, haptoglobin level, and ADAMTS13 level. Nevertheless, we consider that it does not take away the merit of this case report, since it included a histopathological examination of renal biopsy specimen. In the future, repeat renal biopsy proving the disappearance of the TMA would further support our conclusion.

We reported a case of renal TMA that had probably been induced by intravitreal injection of aflibercept for DME. This is a precious report of pathologically investigated renal TMA due to intravitreal injection of aflibercept for DME in a patient with a history of type 2 DM, which improved simply by discontinuing intravitreal injections of aflibercept, without the use of corticosteroids or other drugs. It is therefore necessary to perform careful monitoring of the development of renal damage during intravitreal injection of aflibercept.

Abbreviations

ADPKD: Autosomal dominant polycystic kidney disease; Aflib: Aflibercept; AIN: Acute interstitial nephritis; AMD: Age-related macular degeneration; Bev: Bevacizumab; BPH: Benign prostatic hyperplasia; C1q: Complement component 1q; C3: Complement component 3; C4c: Complement component 4; CAD: Coronary artery disease; CC: Corticosteroids; cFSGS: Collapsing focal and segmental sclerosis; CKD: Chronic Kidney Disease; CKD-EPI: Chronic Kidney Diseases – Epidemiology Collaboration; COPD: Chronic obstructive pulmonary disease; CyA: Cyclophosphamide; DM: Diabetic mellitus; DME: Diabetic macular edema; DN: Diabetic nephropathy; DR: Diabetic retinopathy; ESRD: End-stage renal disease; FPI: Fresh plasma infusion; GBM: Glomerular basement membrane; HD: Hemodialysis; HNS: Hypertensive nephrosclerosis; HT: Hypertension; IgA: Immunoglobulin A; IgG: Immunoglobulin G; IgM: Immunoglobulin M; IVIG: Intravenous immunoglobulin; M: Months; MD: Macular degeneration; MGN: Membranous glomerulonephritis; MMF: Mycophenolate mofetil; NR: Not recorded; Paf: Paroxysmal atrial fibrillation; PE: Plasma exchange; PSL: Prednisone; Ran: Ranibizumab; SSC: Systemic sclerosis; T1DM: Type 1 diabetic mellitus; T2DM: Type 2 diabetic mellitus; TMA: Thrombotic microangiopathy; VEGF: Vascular endothelial growth factor; VEGFI: Vascular endothelial growth factor inhibitor; VEGFIs: Vascular endothelial growth factor inhibitors; Y: Years.

Supplementary Information

The online version contains supplementary material available at <https://doi.org/10.1186/s12882-022-02986-2>.

Additional file 1: Table 1. Summary of literature on renal biopsy after intravitreal injection of vascular endothelial growth factor inhibitors.

Acknowledgements

Not applicable.

Authors' contributions

YK, YO, and KY wrote the manuscript and were physicians for the patient, and KY carried out final preparation of the manuscript. TO, MH, and MS were also physicians for the patient. HO performed and evaluated renal biopsy specimens. FT, YI, and KA participated in discussion of the patient's treatment. All authors have read and approved the final manuscript.

Funding

Not applicable.

Availability of data and materials

Not applicable.

Declarations

Ethics approval and consent to participate

Not applicable.

Consent for publication

Written informed consent was obtained from the patient for the publication of this case report. A copy of the written consent is available for review by the Editor of this journal.

Competing interests

The authors declare that they have no competing interests.

Author details

¹Division of Nephrology and Hypertension, Department of Internal Medicine, Iwate Medical University School of Medicine, Iwate, Japan. ²Division of Diabetes, Metabolism and Endocrinology, Department of Internal Medicine, Iwate Medical University School of Medicine, Iwate, Japan. ³Department of Internal Medicine, Morioka Tsunagi Onsen Hospital, Morioka, Japan.

Received: 23 February 2022 Accepted: 24 October 2022

Published: 29 October 2022

References

- Hanna RM, Barsoum M, Arman F. Nephrotoxicity induced by intravitreal vascular endothelial growth factor inhibitors: emerging evidence. *Kidney Int.* 2019;96(3):572–80. <https://doi.org/10.1016/j.kint.2019.02.042>.
- Hanna RM, Ahdoot RS, Kim MS, Jhaveri KD, Kalantar-Zadeh K, Kurtz IB. Intravitreal vascular endothelial growth factors hypertension, proteinuria, and renal injury: a concise review. *Curr Opin Nephrol Hypertens.* 2022;31(1):47–56. <https://doi.org/10.1097/MNH.0000000000000760>.
- Estrada CC, Maldonado A, Mallipattu SK. Therapeutic inhibition of VEGF signaling and associated nephrotoxicities. *J Am Soc Nephrol.* 2019;30(2):187–200. <https://doi.org/10.1681/ASN.2018080853>.
- Amoaku WM, Ghanchi F, Bailey C, Banerjee S, Banerjee S, Downey L, et al. Diabetic retinopathy and diabetic macular oedema pathways and management: UK Consensus Working Group. *Eye (Lond).* 2020;34(Suppl 1):1–51. <https://doi.org/10.1038/s41433-020-0961-6>.
- Tschulakow A, Christner S, Julien S, Ludinsky M, Giet M, Schraermeyer U. Effects of a single intravitreal injection of aflibercept and ranibizumab on glomeruli of monkeys. *PLoS ONE.* 2014;9(11):e113701. <https://doi.org/10.1371/journal.pone.0113701>.
- Glassman AR, Liu D, Jampol LM, Sun JK. Diabetic Retinopathy Clinical Research Network. Changes in blood pressure and urine albumin-creatinine ratio in a randomized clinical trial comparing aflibercept, bevacizumab, and ranibizumab for diabetic macular edema. *Invest Ophthalmol Vis Sci.* 2018;59(3):1199–205. <https://doi.org/10.1167/iovs.17-22853>.
- Bagheri SD, Afarid M, Sagheb MM. Proteinuria and renal dysfunction after intravitreal injection of bevacizumab in patients with diabetic nephropathy: a prospective observational study. *Galen Med J.* 2018;7:e1299. <https://doi.org/10.22086/gmj.v0i0.1299>.
- Kameda Y, Babazono T, Uchigata Y, Kitano S. Renal function after intravitreal administration of vascular endothelial growth factor inhibitors in patients with diabetes and chronic kidney disease. *J Diabetes Investig.* 2018;9(4):937–9. <https://doi.org/10.1111/jdi.12771>.
- O'Neill RA, Gallagher P, Douglas T, Little JA, Maxwell AP, Silvestri G, et al. Evaluation of longterm intravitreal anti-vascular endothelial growth factor injections on renal function in patients with and without diabetic kidney disease. *BMC Nephrol.* 2019;20(1):478. <https://doi.org/10.1186/s12882-019-1650-1>.
- Jalalonmuhali M, Kamalden TAFT, Ismail NS, Yong SY, Teo WT, Lim SK. Adverse renal outcome following administration of intravitreal anti-vascular endothelial growth factor inhibitors in a single tertiary centre in Malaysia. *Nephrol Dial Transplant.* 2020;142:590. <https://doi.org/10.1093/ndt/gfaa142.P0590>.
- Chung YR, Kim YH, Byeon HE, Jo DH, Kim JH, Lee K. Effect of a single intravitreal injection of bevacizumab on proteinuria in patients with diabetes. *Transl Vis Sci Technol.* 2020;9(4):4. <https://doi.org/10.1167/tvst.9.4.4>.
- Rasier R, Artunay O, Yuzbasioglu E, Sengul A, Bahcecioglu H. The effect of intravitreal bevacizumab (avastin) administration on systemic hypertension. *Eye (Lond).* 2009;23(8):1714–8. <https://doi.org/10.1038/eye.2008.360>.
- Lee K, Yang H, Lim H, Lew HM. A prospective study of blood pressure and intraocular pressure changes in hypertensive and nonhypertensive patients after intravitreal bevacizumab injection. *Retina.* 2009;29(10):1409–17. <https://doi.org/10.1097/IAE.0b013e3181b21056>.
- Risicic D, Milenkovic S, Nikolic D, Simeunovic D, Jaksic V, Stojkovic M, et al. Influence of intravitreal injection of bevacizumab on systemic blood pressure changes in patients with exudative form of age-related macular degeneration. *Hellenic J Cardiol.* 2013;54(6):435–40.
- Shah AR, Van Horn AN, Verchinina L, Wichorek M, Su L, Markel D, et al. Blood pressure is associated with receiving intravitreal anti-vascular endothelial growth factor treatment in patients with diabetes. *Ophthalmol Retina.* 2019;3(5):410–6. <https://doi.org/10.1016/j.oret.2019.01.019>.
- Avery RL, Gordon GM. Systemic safety of prolonged monthly anti-vascular endothelial growth factor therapy for diabetic macular edema: a systematic review and metaanalysis. *JAMA Ophthalmol.* 2016;134(1):21–9. <https://doi.org/10.1001/jamaophthalmol.2015.4070>.
- Hanhart J, Comaneshter DS, Freier Dror Y, Vinker S. Mortality in patients treated with intravitreal bevacizumab for age-related macular degeneration. *BMC Ophthalmol.* 2017;17(1):189. <https://doi.org/10.1186/s12886-017-0586-0>.
- Hanhart J, Comaneshter DS, Freier-Dror Y, Vinker S. Mortality associated with bevacizumab intravitreal injections in age-related macular degeneration patients after acute myocardial infarct: a retrospective population-based survival analysis. *Graefes Arch Clin Exp Ophthalmol.* 2018;256(4):651–63. <https://doi.org/10.1007/s00417-018-3917-9>.
- Hanhart J, Comaneshter DS, Vinker S. Mortality after a cerebrovascular event in age-related macular degeneration patients treated with bevacizumab ocular injections. *Acta Ophthalmol.* 2018;96(6):e732–9. <https://doi.org/10.1111/aos.13731>.
- Dalvin LA, Starr MR, AbouChehade JE, Damento GM, Garcia M, Shah SM, et al. Association of intravitreal anti-vascular endothelial growth factor therapy with risk of stroke, myocardial infarction, and death in patients with exudative age-related macular degeneration. *JAMA Ophthalmol.* 2019;137(5):483–90. <https://doi.org/10.1001/jamaophthalmol.2018.6891>.
- Pellé G, Shweke N, Van Huyen J-PD, Tricot L, Hessaine S, Frémeaux-Bacchi V, et al. Systemic and kidney toxicity of intraocular administration of vascular endothelial growth factor inhibitors. *Am J Kidney Dis.* 2011;57(5):756–9. <https://doi.org/10.1053/j.ajkd.2010.11.030>.
- Anto HR, Hyman GF, Li JP, Spitalowitz S, Thomas D. Membranous nephropathy following intravitreal injection of bevacizumab. *Can J Ophthalmol.* 2012;47(1):84–6. <https://doi.org/10.1016/j.jcjo.2011.12.024>.

23. Cheungpasitporn W, Chebib FT, Cornell LD, Brodin ML, Nasr SH, Schinstock CA, et al. Intravitreal anti-vascular endothelial growth factor therapy may induce proteinuria and antibody mediated injury in renal allografts. *Transplant*. 2015;99(11):2382–6. <https://doi.org/10.1097/TP.0000000000000750>.
24. Khneizer G, Al-Tae A, Bastani B. Self-limited membranous nephropathy after Intravitreal nephropathy after intravitreal bevacizumab therapy for age related macular degeneration. *J Nephropathol*. 2017;6(3):134–7. <https://doi.org/10.15171/jnp.2017.23>.
25. Valsan D, Kazi S. Intravitreal VEGF inhibitor causing allergic interstitial nephritis. *Am J Kidney Dis*. 2017;69(4):A99. <https://doi.org/10.1053/j.ajkd.2017.02.339>.
26. Hanna RM, Lopez E, Hasnain H, Selamet U, Wilson J, Youssef PN, et al. Three patients with injection of intravitreal vascular endothelial growth factor inhibitors and subsequent exacerbation of chronic proteinuria and hypertension. *Clin Kidney J*. 2019;12(1):92–100. <https://doi.org/10.1093/ckj/sfy060>.
27. Nobakht NN, Nguyen HA, Kamgar MK, Abdelnour L, Rastogi A, Hanna RM. Development of collapsing focal and segmental glomerulosclerosis in a patient receiving intravitreal vascular endothelial growth factor blockade. *Kidney Int Rep*. 2019;4(10):1508–12. <https://doi.org/10.1016/j.ekir.2019.07.019>.
28. Touzani F, Geers C, Pozdzik A. Intravitreal injection of antiVEGF antibody induces glomerular endothelial cells injury. *Case Rep Nephrol*. 2019;2019:2919080. <https://doi.org/10.1155/2019/2919080>.
29. Yin W, Zhang PL. Intravitreal injection of avastin (IIA) over time can be associated with thrombotic microangiopathy (TMA) in the native kidney. *J Am Soc Nephrol*. 2019;30:153–4.
30. Shye M, Hanna RM, Patel SS, Tram-Tran N, Hou J, Mccannel C, et al. Worsening proteinuria and renal function after intravitreal vascular endothelial growth factor blockade for diabetic proliferative retinopathy. *Clin Kidney J*. 2020;13(6):969–80. <https://doi.org/10.1093/ckj/sfaa049>.
31. Kakeshita K, Koike T, Imamura T, Murai S, Fujioka H, Yamazaki H, et al. Nephrotic syndrome with focal segmental glomerulosclerosis induced by intravitreal injections of vascular endothelial growth factor inhibitor. *Intern Med*. 2020;59(23):5410–20. <https://doi.org/10.2169/internalmedicine.5410-20>.
32. Hanna RM, Tran NT, Patel SS, Hou J, Jhaveri KD, Parikh R, et al. Thrombotic microangiopathy and acute kidney injury induced after intravitreal injection of vascular endothelial growth factor inhibitors VEGF blockade-related TMA after intravitreal use. *Front Med (Lausanne)*. 2020;7:579603. <https://doi.org/10.3389/fmed.2020.579603>.
33. Hanna RM, Abdelnour L, Zuckerman JE, Ferrey AJ, Pai A, Vahabzadeh K, et al. Refractory scleroderma renal crisis precipitated after high-dose oral corticosteroids and concurrent intravitreal injection of bevacizumab. *SAGE Open Med Case Rep*. 2020;8:2050313X20952650. <https://doi.org/10.1177/2050313X20952650>.
34. Phadke G, Hanna RM, Ferrey AJ, Torres EA, Singla A, Kaushal A, et al. Review of intravitreal vascular endothelial growth factor inhibitor toxicity, and report of collapsing focal and segmental sclerosis with thrombotic microangiopathy in a patient with age-related macular degeneration. *Clin Kidney J*. 2021;14(10):2158–65. <https://doi.org/10.1093/ckj/sfab066>.
35. Avery RL, Castellarin AA, Steinle NC, Dhoot DS, Pieramici DJ, See R, et al. Systemic pharmacokinetics following intravitreal injections of ranibizumab, bevacizumab or aflibercept in patients with neovascular AMD. *Br J Ophthalmol*. 2014;98(12):1636–41. <https://doi.org/10.1136/bjophthalmol-2014-305252>.
36. Avery RL, Castellarin AA, Steinle NC, Dhoot DS, Pieramici DJ, See R, et al. Systemic pharmacokinetics and pharmacodynamics of intravitreal aflibercept, bevacizumab, and ranibizumab. *Retina*. 2017;37(10):1847–58. <https://doi.org/10.1097/IAE.0000000000001493>.
37. Sadiq MA, Halim MS, Hassan M, Onghanseng N, Karaca I, Agarwal A, et al. Pharmacological agents in development for diabetic macular edema. *Int J Retina Vitreous*. 2020;6:29. <https://doi.org/10.1186/s40942-020-00234-z>.
38. Laszik ZG, Kambham N, Silva FG. Thrombotic Microangiopathies. In: Janette JC, Olson JL, Silva FG, D'Agati VD, editors. *Heptinstall's Pathology of the Kidney*, vol. II. 7th ed. Philadelphia, PA, USA: Wolters Kluwer; 2015. p. 739–814.
39. Vincenzo AD, Battini S, Russo L, Mazzocut S, Mauer M, Fioretto P. Renal structure in type 2 diabetes: facts and misconceptions. *J Nephrol*. 2020;33(5):901–7. <https://doi.org/10.1007/s40620-020-00797-y>.
40. Person F, Rinschen MM, Brix SR, Wulf S, Noriega MM, Fehrle W, et al. Bevacizumab-associated glomerular microangiopathy. *Mod Pathol*. 2019;32(5):684–700. <https://doi.org/10.1038/s41379-018-0186-4>.

Publisher's Note

Springer Nature remains neutral with regard to jurisdictional claims in published maps and institutional affiliations.

Ready to submit your research? Choose BMC and benefit from:

- fast, convenient online submission
- thorough peer review by experienced researchers in your field
- rapid publication on acceptance
- support for research data, including large and complex data types
- gold Open Access which fosters wider collaboration and increased citations
- maximum visibility for your research: over 100M website views per year

At BMC, research is always in progress.

Learn more biomedcentral.com/submissions

