

CASE REPORT

Open Access

Renal thrombotic microangiopathy and podocytopathy associated with the use of carfilzomib in a patient with multiple myeloma

Liliane Hobeika^{1*}, Sally E Self² and Juan Carlos Q Velez³

Abstract

Background: Proteasome inhibitors are a relatively new class of chemotherapeutic agents. Bortezomib is the first agent of this class and is currently being used for the treatment of multiple myeloma. However, recent reports have linked exposure to bortezomib with the development of thrombotic microangiopathy. A new agent in this class, carfilzomib, has been recently introduced as alternative therapy for relapsing and refractory multiple myeloma. We report a case of renal thrombotic microangiopathy associated with the use of carfilzomib in a patient with refractory multiple myeloma.

Case presentation: A 62 year-old Caucasian man with hypertension and a 4-year history of multiple myeloma, had been previously treated with lenalidomide, bortezomib and two autologous hematopoietic stem cell transplants. After the second hematopoietic stem cell transplant, he developed acute kidney injury secondary to septic shock and required dialysis for 4 weeks. Subsequently, his serum creatinine stabilized at 2.1 mg/dL (185.64 μ mol/L). Seventeen months after the second hematopoietic stem cell transplant, he was initiated on carfilzomib for relapse of multiple myeloma. Six weeks later, he developed abrupt worsening of lower extremity edema and hypertension, and new onset proteinuria. His kidney function remained stable. Kidney biopsy findings were consistent with thrombotic microangiopathy. Eight weeks after discontinuation of carfilzomib, proteinuria and hypertension improved. Due to progression of multiple myeloma, he died a few months later.

Conclusion: In view of the previously reported association of bortezomib with thrombotic microangiopathy, the temporal association of the clinical picture with the initiation of carfilzomib, and the partial resolution of symptoms after discontinuation of the drug, we conclude that carfilzomib may have precipitated a case of clinically evident renal thrombotic microangiopathy in our patient.

Keywords: Thrombotic microangiopathy, Malignant hypertension, Proteasome inhibitor, Proteinuria

Background

Because impairment of kidney function in patients with multiple myeloma (MM) can be caused by a variety of conditions, ascertaining the etiology of kidney dysfunction in patients with MM represents a challenging task for the practicing nephrologist. Patients with MM are at risk of acquiring acute kidney injury (AKI) as a result of light chain cast nephropathy [1], hypercalcemia [2], bisphosphonate-induced tubular injury [3] and lenalidomide nephrotoxicity [4]. Similarly, syndromes of glomerular involvement can

also occur in MM as a result of light or heavy chain deposition disease, amyloidosis or bisphosphonate-induced podocytopathy. Furthermore, patients with MM who undergo hematopoietic stem cell transplantation (HSCT) are also at risk of acquiring renal syndromes inherent to HSCT, such as ischemic acute tubular necrosis and thrombotic microangiopathy (TMA) [5,6]. The clinical features of TMA syndromes include microangiopathic hemolytic anemia, thrombocytopenia, and organ injury. The pathological features are vascular damage manifested by arteriolar and capillary thrombosis with characteristic abnormalities in the endothelium and vessel wall. Renal pathology in TMA is characterized by thickened capillary walls, occlusion of vascular lumens, fibrin deposition

* Correspondence: liliane.hobeika@louisville.edu

¹Division of Nephrology and Hypertension, Department of Medicine, University of Louisville, 615 South Preston Street, Louisville, KY 40202, USA
Full list of author information is available at the end of the article

and endothelial separation with expansion of sub-endothelial zone.

Over the last few years, multiple reports have unveiled an association between anti-angiogenic therapy and TMA. Antineoplastic drugs designed to target vascular endothelial growth factor (VEGF) such as sunitinib, sorafenib, bevacizumab, and others, have been linked to the development of a syndrome characterized by severe hypertension and/or acute or chronic kidney injury, with or without proteinuria, and associated with histopathological evidence of TMA in the kidney [7,8]. Bortezomib is a proteasome inhibitor that was approved by the Food and Drug Administration (FDA) in 2003 for the treatment of refractory MM and subsequently in 2008 as an initial treatment of patients with MM. Although it does not target VEGF directly, bortezomib has also been reported to be associated with TMA. In July 2012, a new member in its class, carfilzomib, was approved by the FDA for the treatment of relapsing or refractory MM.

In this report, we summarize the case of a patient with MM status post autologous HSCT and chronic kidney disease who experienced worsening hypertension along with a substantial increase in proteinuria shortly after the initiation of carfilzomib for the treatment of refractory disease. We propose carfilzomib as a possible trigger of malignant hypertension and renal TMA in this case.

Case presentation

The patient was a 62 year-old Caucasian man with a long-standing history of essential hypertension and a 4-year history of MM (IgG kappa subtype). The latter was diagnosed after suffering a T7 compression fracture. At that time, his kidney function was normal (serum creatinine: 0.9 mg/dL (79.56 μ mol/L)) and his blood pressure was fairly well controlled on four agents (carvedilol extended-release 80 mg daily, diltiazem 60 mg three times daily, valsartan 320 mg daily and hydralazine 25 mg three times daily). As initial therapy for MM, he received melphalan for conditioning, four cycles of lenalidomide and dexamethasone, followed by autologous HSCT. Three months later, his kidney function remained within normal limits. He subsequently developed a few episodes of volume depletion associated with transient increases in serum creatinine level, after which his serum creatinine stabilized at a level of 1.4 mg/dL (123.76 μ mol/L). Ten months after HSCT, he was started on bortezomib, cyclophosphamide and dexamethasone (VCD) due to progression of MM. He received five cycles of VCD. His blood pressure remained fairly well controlled with no changes to his anti-hypertensive regimen. Fifteen months after the first HSCT and 1 month after completing VCD, he underwent a second autologous HSCT for relapse. This time, the hospital course was complicated with septic shock and a severe bout of AKI, with

serum creatinine peaking at 7.4 mg/dL (654.16 μ mol/L). After requiring four weeks of acute hemodialysis, he partially regained kidney function, ultimately being discharged from the hospital with a new baseline serum creatinine of 2.1 mg/dL (185.64 μ mol/L). At the time of discharge, his antihypertensive regimen was modified to avoid blockade of the renin-angiotensin system in the setting of AKI. Accordingly, he was switched to hydralazine 50 mg three times daily, diltiazem extended-release 360 mg daily, metoprolol 200 mg twice daily and a clonidine patch 0.3 mg/24 h.

Seventeen months after the second HSCT, a follow-up bone marrow biopsy specimen revealed persistent plasma cell infiltration. As a result, he was initiated on carfilzomib (20 mg/m²; followed by 27 mg/m², four weeks apart), thalidomide 100 mg daily and dexamethasone 20 mg per week. Six weeks after the initiation of chemotherapy, the patient developed abrupt worsening of lower extremity edema and his hypertension became more difficult to control. After being stable with four agents (hydralazine, diltiazem, metoprolol and clonidine) averaging a blood pressure of 142/74 mmHg during previous office visits, he presented with a blood pressure of 206/100 mmHg (Figure 1). His physical examination also revealed pallor, but otherwise no additional abnormalities. Laboratory data showed: hemoglobin 8.2 g/dL (5.09 μ mol/L), platelet count 53 K/cumm, serum creatinine 2.1 mg/dL (185.64 μ mol/L), lactate dehydrogenase 183 IU/L, haptoglobin 23 mg/dL (0.23 g/L), total bilirubin 0.6 mg/dL (10.26 μ mol/L), C3 112.3 mg/dL (1.123 g/L) (normal range: 88–201 mg/dL), C4 54.4 mg/dL (0.544 g/L) (normal range: 16–47 mg/dL), albumin 2.8 g/dL (28 g/L), serum kappa free light chain 82.4 mg/dL (normal range: 0.33-1.94), serum lambda free light chain 0.69 mg/dL (normal range: 0.57-2.63), serum free kappa/lambda ratio 119.42 (normal range: 0.26-1.65). Urinalysis showed 300 mg/dL protein on dipstick but no hematuria or pyuria. Urine protein electrophoresis showed elevated kappa light chain in the gamma zone at 11.9 mg/dL (232 mg per 24 hours) and a 24-hour urine collection revealed 2.6 grams of protein (53.3% albumin). Previous testing had shown presence of low-grade proteinuria (less than 0.5 grams per day) (Table 1). In addition to his antihypertensives, he was also taking acyclovir, citalopram, esomeprazole, zolpidem, tramadol and aspirin. He required the addition of eplerenone 25 mg daily, nifedipine extended-release 90 mg daily and benazepril 30 mg daily, for a total of 7 antihypertensives. Despite the 7-drug combination, he remained hypertensive averaging 190/95 mmHg.

A renal sonogram revealed a right kidney of 10.8 and a left kidney of 10.6 cm of longitudinal diameter with moderately increased cortical echogenicity. Following acute reduction of blood pressure with intravenous labetalol, an

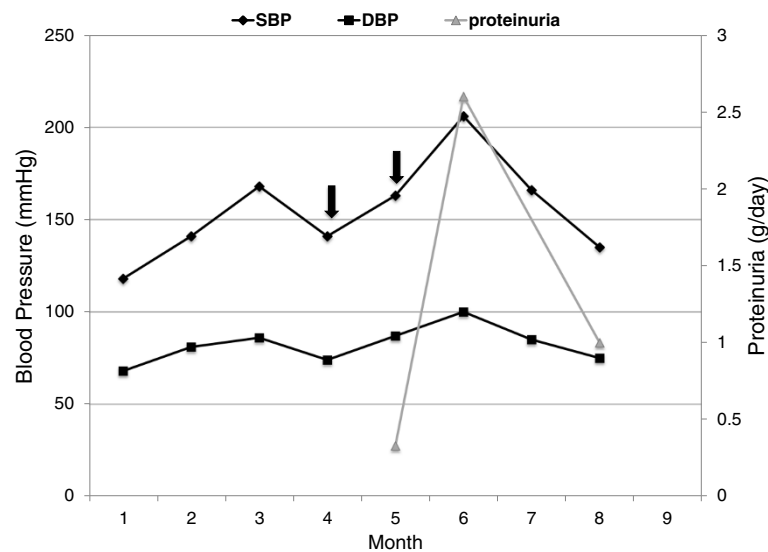


Figure 1 Schematic illustrating the clinical and laboratory presentation of our patient. Proteinuria in month 5 was measured on a spot urine sample. Proteinuria in months 6 and 8 was estimated from a 24-hour urine collection. Black arrows reflect carfilzomib administration (20 mg/m² in month 4, and 27 mg/m² in month 5).

ultrasound-guided percutaneous kidney biopsy was performed to evaluate the newly developed overt proteinuria. Histological examination of the biopsy specimen on light microscopy disclosed 8 out of 17 globally sclerotic glomeruli, some mesangiolysis (Figure 2a), moderate interstitial fibrosis and tubular atrophy, and severe arteriolar hyalinosis. There was no evidence of myeloma cast nephropathy. No thrombi were identified in the glomerular capillaries or arterioles. Congo red stain was negative. Immunofluorescence showed 4 out of 14 glomeruli with global sclerosis and one small artery that stained intensely for fibrin (Figure 2b), C1q, IgM and C3. The corresponding H&E-stained cryosection showed a thrombus in that artery. The specimen was negative for linear deposition of IgG or kappa along the glomerular and tubular basement membranes. Electron microscopy of one glomerulus showed diffuse foot process effacement, endothelial cell

swelling and some loops with flocculent material between the endothelial cell and the glomerular basement membrane (Figure 2c). There was no immune complex deposition or finely granular electron dense deposits along the glomerular or tubular basement membranes. In summary, the findings were consistent with TMA, glomerular podocytopathy, hypertensive-related injury and chronic scarring.

After the results of the kidney biopsy were reviewed and discussed, carfilzomib was discontinued. Eight weeks later, proteinuria slightly improved to 1 gram on a 24 hour urine collection. His serum creatinine remained stable at 1.7 mg/dL (150.28 μmol/L) at that time. His arterial blood pressure improved significantly averaging 135/75 mmHg on 5 agents. Due to progression of MM and a joint decision of not pursuing further treatment, the patient died four months later.

Table 1 Laboratory values

Variable (normal range)	2 months prior to biopsy	At time of biopsy	2 months after biopsy
Hemoglobin (14–18 g/dL)	8.8	8.2	8.0
Platelets (140–440 k/cumm)	75	53	62
Serum Creatinine (0.6–1.3 mg/dL)	2.1	2.1	1.7
LDH (100–240 IU/L)	NA	183	174
Haptoglobin (36–195 mg/dL)	NA	23	5
Serum M-spike (g/dL)	1.06	0.78	1.18
Proteinuria (0–0.3 g/day)	0.33	2.6	1.0
albumin on UPEP (%)	NA	53.3	49.3
M-spike on UPEP (%)	NA	8.8	13.7

Abbreviations: LDH, lactate dehydrogenase; NA, not available; UPEP, urine protein electrophoresis.

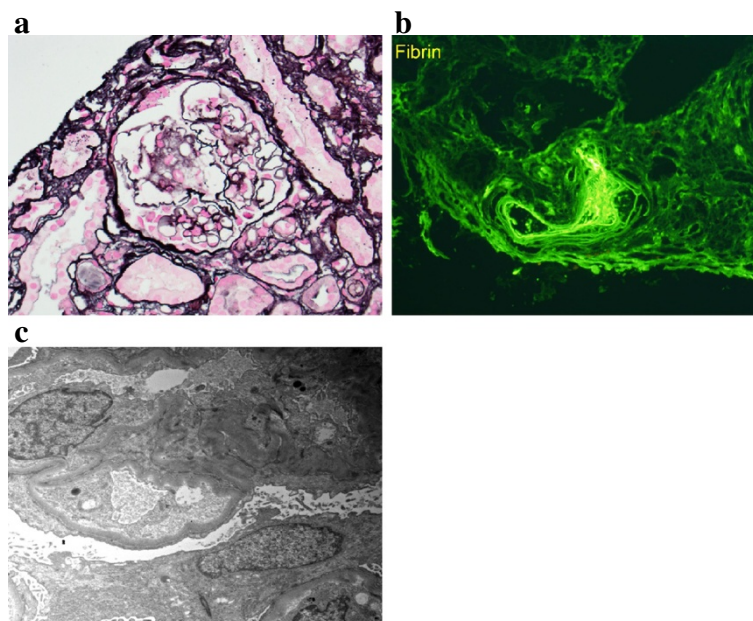


Figure 2 Renal histologic findings in the patient. **a.** Light microscopy: mesangiolysis on Jones' methenamine silver stain. **b.** Immunofluorescence: Small artery intensely stained for fibrin. **c.** Electron microscopy: Endothelial cell swelling and flocculent material between endothelial cell and glomerular basement membrane.

Discussion

We present a case of an individual who experienced abrupt worsening of hypertension and proteinuria 6 weeks after receiving carfilzomib for the treatment of refractory MM. A kidney biopsy specimen revealed a TMA lesion along with podocytopathy and evidence of chronic scarring. No previous report of renal TMA associated with carfilzomib was found in published literature. Applying the Naranjo criteria for adverse drug reactions [9], the present case meets the criteria of 'possible' association with TMA. First, the timing of the administration of the drug and the subsequent clinical syndrome support our contention. The onset of worsening hypertension and proteinuria coincided with the initiation of carfilzomib, as depicted in Figure 1. Secondly, there is a precedent of reports of a drug of a similar class being associated with TMA. Thirdly, the patient partially recovered after the drug was discontinued.

Renal TMA is a known complication of HSCT that typically occurs approximately 3 months post-transplantation (range 14 – 240 days) [10]. Notably, it is much more likely to occur after allogeneic compared to autologous HSCT, occurring in 8-12% following allogeneic HSCT. Although factors inherent to HSCT, such as graft-versus-host disease, high-dose chemotherapy, and total body irradiation have been implicated in the pathogenesis of allogeneic HSCT-associated renal TMA, it is generally thought that the use of calcineurin inhibitors (CI) may largely explain the increased incidence of renal TMA [5,6] after

allogeneic HSCT given the well-described association between CIs and TMA in solid organ transplantation [11]. On the other hand, TMA associated with autologous HSCT is extremely rare, only case reports were found in the literature [12-14]. In our case, the second autologous HSCT was performed more than a year prior to the onset of worsening proteinuria and malignant hypertension. Therefore, the type of HSCT, the absence of CI therapy and the timing of the clinical presentation do not favor autologous HSCT as the primary etiology of renal TMA in our patient. Radiation therapy was not given in this case.

The development of overt proteinuria along with uncontrolled hypertension stimulated the clinical decision to perform a kidney biopsy. In addition to the TMA lesion, the biopsy specimen revealed evidence of podocytopathy in the form of diffuse foot process effacement, thereby explaining the proteinuric nature of the renal syndrome. Various degrees of focal or diffuse foot process effacement were reported in all the patients included in a case series describing the association of TMA and chemotherapy with monoclonal antibodies against vascular endothelial growth factor (VEGF) [8].

We identified 4 cases of bortezomib-associated TMA in the medical literature. Two of those reports described cases of patients with MM who developed microangiopathic hemolytic anemia and thrombocytopenia during the course of the first cycle of bortezomib [15,16]. ADAMTS13 activity was normal in both cases. The

subjects improved after drug discontinuation. Two additional reports described cases of microangiopathic hemolytic anemia and thrombocytopenia complicated with AKI [17,18]. Although kidney biopsy was not performed, a renal TMA lesion was suspected. In addition to drug discontinuation, those patients underwent plasmapheresis.

Bortezomib is a dipeptide boronate 20S proteasome inhibitor. It inhibits nuclear factor kappa B (NF-KB) translocation/transcription activity by blocking the degradation of its inhibitor I κ B. Inhibition of NF-KB leads to a decrease in VEGF transcription [19]. Production of VEGF by podocytes is indispensable for maintenance of the adjacent glomerular endothelium. Anti-VEGF chemotherapeutic agents, such as bevacizumab and sorafenib, can cause TMA by direct microvascular toxicity initiated by endothelial injury [8,20,21]. Bortezomib can also inhibit IL-6 induced proliferation and angiogenesis and enhance the release of pro-inflammatory cytokines (IL-6 and TNF- α) and generation of cell mediated immune response [22]. In addition, it has been shown that VEGF, acting through VEGFR-2, activates endothelial nitric oxide synthase (eNOS) activity, leading to increased vasodilatory nitric oxide production. Anti-VEGF therapies might cause systemic deficiency of nitric oxide with consequent hypertension [23,24]. Therefore, it has been speculated that the mechanism by which proteasome inhibitors may induce TMA also involve modulation of VEGF. Notably, although bortezomib is being increasingly used to treat antibody-mediated rejection in organ transplantation, no reports of associated TMA have emerged to date [25-27]. Therefore, the strength of the association requires further validation.

Carfilzomib is a tetrapeptide epoxyketone proteasome inhibitor. In preclinical studies, carfilzomib showed greater selectivity than bortezomib for the proteasome and had anti-proliferative activity in cells resistant to bortezomib [28]. In view of the previously reported association of bortezomib with TMA [15-18], we speculate that carfilzomib could have been involved in the pathogenesis of renal TMA in our case. In contrast to previous reports of proteasome inhibitor-associated TMA [15-18], our case describes a patient who presented with overt proteinuria and worsening hypertension but without extrarenal features of microangiopathic hemolytic anemia, i.e., renal-limited TMA. Undoubtedly, it could be argued that the long-standing history of essential hypertension could be responsible of some of the histological findings in the kidney biopsy specimen knowing that the renal TMA lesion in our patient is similar to that of malignant hypertension. Nonetheless, we hypothesize that the abruptness of the clinical presentation may reflect the onset of a mechanism of injury induced by carfilzomib, triggering malignant hypertension in a patient who

was perhaps at high risk of developing it due to his underlying essential hypertension.

Conclusions

In summary, we suggest that clinicians should be aware of the possibility of an association between exposure to carfilzomib and the development of a clinical syndrome characterized by worsening proteinuria and uncontrolled HTN and pathological evidence of renal TMA. Discontinuation of the drug should be considered only after careful evaluation of risks and benefits of the chemotherapy and the prognosis of the existing malignancy.

Consent

Informed consent was obtained from the next of kin for publication of this case.

Abbreviations

AKI: Acute kidney injury; eNOS: Endothelial nitric oxide synthase; FDA: Food and drug administration; HSCT: Hematopoietic stem cell transplantation; MM: Multiple myeloma; NF-KB: Nuclear factor kappa B; TMA: Thrombotic microangiopathy; VCD: Bortezomib, cyclophosphamide and dexamethasone; VEGF: vascular endothelial growth factor.

Competing interests

The authors declare that they have no competing interests.

Authors' contributions

JCV and LH were the physicians who treated the patient in this report. SS was the pathologist who read the biopsy. The manuscript was prepared by LH under the direct supervision of JCV. All the authors participated in discussions about the manuscript and approved the final version.

Acknowledgments

Support

J.C.Q.V. is supported by a grant from Dialysis Clinics Incorporated.

Financial disclosure

J.C.Q.V. is a member of the Speaker Bureau for Otsuka Pharmaceuticals and Questcor Pharmaceuticals.

Author details

¹Division of Nephrology and Hypertension, Department of Medicine, University of Louisville, 615 South Preston Street, Louisville, KY 40202, USA. ²Department of Pathology, Medical University of South Carolina, Charleston, SC, USA. ³Division of Nephrology, Department of Medicine, Medical University of South Carolina, Charleston, SC, USA.

Received: 8 April 2014 Accepted: 22 September 2014

Published: 30 September 2014

References

1. Sanders PW, Booker BB: **Pathobiology of cast nephropathy from human Bence Jones proteins.** *J Clin Invest* 1992, **89**(2):630. doi:10.1172/JCI115629.
2. Smolens P, Barnes JL, Kreisberg R: **Hypercalcemia can potentiate the nephrotoxicity of Bence Jones proteins.** *J Lab Clin Med* 1987, **110**:460-465.
3. Markowitz GS, Fine PL, Stack JJ, Kunis CL, Radhakrishnan J, Palecki W, Park J, Nasr SH, Hoh S, Siegel DS, D'Agati VD: **Toxic acute tubular necrosis following treatment with zoledronate.** *Kidney Int* 2003, **64**(1):281-289.
4. Batts ED, Sancharawala V, Hegerfeldt Y, Lazarus HM: **Azotemia associated with use of lenalidomide in plasma cell dyscrasias.** *Leuk Lymphoma* 2008, **49**(6):1108-1115. doi:10.1080/10428190802023707.
5. Parikh CR, Coca SG: **Acute renal failure in hematopoietic cell transplantation.** *Kidney Int* 2006, **69**(3):430-435.
6. Changsirikulchai S, Myerson D, Guthrie KA, McDonald GB, Alpers CE, Hingorani SR: **Renal thrombotic microangiopathy after hematopoietic cell**

- transplant: role of GVHD in pathogenesis. *Clin J Am Soc Nephrol* 2009, **4**(2):345–353. doi:10.2215/CJN.02070508.
7. Choi MK, Hong JY, Jang JH, Lim HY: **TTP-HUS associated with sunitinib.** *Cancer Res Treat* 2008, **40**(4):211–213. doi:10.4143/crt.2008.40.4.211.
 8. Eremina V, Jefferson JA, Kowalewska J, Hochster H, Haas M, Weisstuch J, Richardson C, Kopp JB, Kabir MG, Backx PH, Gerber HP, Ferrara N, Barisoni L, Alpers CE, Quaggin SE: **VEGF inhibition and renal thrombotic microangiopathy.** *N Engl J Med* 2008, **358**(11):1129–1136. doi:10.1056/NEJMoa0707330.
 9. Naranjo CA, Busto U, Sellers EM, Sandor P, Ruiz I, Roberts EA, Janecek E, Domecq C, Greenblatt DJ: **A method for estimating the probability of adverse drug reactions.** *Clin Pharmacol Ther* 1981, **30**(2):239–245.
 10. Iacopino P, Pucci G, Arcese W, Bosi A, Falda M, Locatelli F, Marengo P, Miniero R, Morabito F, Rossetti F, Sica S, Uderzo C, Bacigalupo A: **Severe thrombotic microangiopathy: an infrequent complication of bone marrow transplantation.** *Bone Marrow Transplant* 1999, **24**(1):47–51.
 11. Griffiths MH, Crowe AV, Papadaki L, Banner NR, Yacoub MH, Thompson FD, Neild GH: **Cyclosporin nephrotoxicity in heart and lung transplant patients.** *Q J Med* 1996, **89**(10):751–763.
 12. Roy V, Rizvi MA, Vesely SK, George JN: **Thrombotic thrombocytopenic purpura-like syndromes following bone marrow transplantation: an analysis of associated conditions and clinical outcomes.** *Bone Marrow Transplant* 2001, **27**(6):641–646.
 13. Lugassy G, Ducach A, Blumenthal R: **Fatal chronic relapsing thrombotic thrombocytopenic purpura following autologous bone marrow transplantation for chronic myeloid leukemia.** *Bone Marrow Transplant* 1998, **21**(8):859–860.
 14. Ohno E, Ohtsuka E, Iwashita T, Uno N, Ogata M, Kikuchi H, Nasu M: **Hemolytic uremic syndrome following autologous peripheral blood stem cell transplantation in a patient with malignant lymphoma.** *Bone Marrow Transplant* 1997, **19**(10):1045–1047.
 15. Morita R, Hashino S, Shirai S, Fujita N, Onozawa M, Kahata K, Kondo T, Imamura M, Asaka M: **Thrombotic microangiopathy after treatment with bortezomib and dexamethasone in a patient with multiple myeloma.** *Int J Hematol* 2008, **88**(2):248–250. doi:10.1007/s12185-008-0140-1.
 16. Moore H, Romeril K: **Multiple myeloma presenting with a fever of unknown origin and development of thrombotic thrombocytopenic purpura post-bortezomib.** *Intern Med J* 2011, **41**(4):348–350. doi:10.1111/j.1445-5994.2011.02458.x.
 17. Salmenniemi U, Remes K: **Thrombotic microangiopathy associated with bortezomib treatment in a patient with relapsed multiple myeloma.** *Hematol Rep* 2012, **4**(2):e13. doi:10.4081/hr.2012.e13.
 18. Mehta N, Saxena A, Niesvizky R: **Bortezomib-induced thrombotic thrombocytopenic purpura.** *BMJ Case Rep* 2012, bcr2012006461. doi:10.1136/bcr-2012-006461.
 19. Karin M, Cao Y, Greten FR, Li ZW: **NF-kappaB in cancer: from innocent bystander to major culprit.** *Nat Rev Cancer* 2002, **2**(4):301–310.
 20. Usui J, Glezerman IG, Salvatore SP, Chandran CB, Flombaum CD, Seshan SV: **Clinicopathological spectrum of kidney diseases in cancer patients treated with vascular endothelial growth factor inhibitors: a report of 5 cases and review of literature.** *Hum Pathol* 2014, **45**(9):1918–1927. doi:10.1016/j.humpath.2014.05.015. Epub 2014 Jun 12.
 21. Vigneau C, Lorcy N, Dolley-Hitze T, Jouan F, Arlot-Bonnemains Y, Laguerre B, Verhoest G, Goujon JM, Belaud-Rotureau MA, Rioux-Leclercq N: **All anti-vascular endothelial growth factor drugs can induce 'pre-eclampsia-like syndrome': a RARE study.** *Nephrol Dial Transplant* 2014, **29**(2):325–332. doi:10.1093/ndt/gft465. Epub 2013 Dec 2.
 22. Mateos MV, San Miguel JF: **Bortezomib in multiple myeloma.** *Best Pract Res Clin Haematol* 2007, **20**(4):701–715.
 23. Horowitz JR, Rivard A, van der Zee R, Hariawala M, Sheriff DD, Esakof DD, Chaudhry GM, Symes JF, Isner JM: **Vascular endothelial growth factor/vascular permeability factor produces nitric oxide-dependent hypotension: evidence for a maintenance role in quiescent adult endothelium.** *Arterioscler Thromb Vasc Biol* 1997, **17**(11):2793–2800.
 24. Robinson ES, Khankin EV, Karumanchi SA, Humphreys BD: **Hypertension induced by vascular endothelial growth factor signaling pathway inhibition: mechanisms and potential use as a biomarker.** *Semin Nephrol* 2010, **30**(6):591–601. doi:10.1016/j.semnephrol.2010.09.007.
 25. Yang KS, Jeon H, Park Y, Jo IH, Kim JI, Moon IS, Choi BS, Park CW, Yang CW, Kim YS, Chung BH: **Use of bortezomib as anti-humoral therapy in kidney transplantation.** *J Korean Med Sci* 2014, **29**(5):648–651. doi:10.3346/jkms.2014.29.5.648. Epub 2014 Apr 25.
 26. Zinn MD, L'Ecuyer TJ, Fagoaga OR, Aggarwal S: **Bortezomib use in a pediatric cardiac transplant center.** *Pediatr Transplant* 2014, **18**(5):469–476. doi:10.1111/ptr.12300. Epub 2014 Jun 14. PMID: 24931171[PubMed - in process].
 27. Eskandary F, Bond G, Schwaiger E, Kikic Z, Winzer C, Wahrmann M, Marinova L, Haslacher H, Regele H, Oberbauer R, Böhmig GA: **Bortezomib in late antibody-mediated kidney transplant rejection (BORTEJECT Study): study protocol for a randomized controlled trial.** *Trials* 2014, **15**:107. doi:10.1186/1745-6215-15-107.
 28. Demo SD, Kirk CJ, Aujay MA, Buchholz TJ, Dajee M, Ho MN, Jiang J, Laidig GJ, Lewis ER, Parlati F, Shenk KD, Smyth MS, Sun CM, Vallone MK, Woo TM, Molineaux CJ, Bennett MK: **Antitumor activity of PR-171, a novel irreversible inhibitor of the proteasome.** *Cancer Res* 2007, **67**(13):6383–6391. doi:10.1186/1471-2369-15-156

Cite this article as: Hobeika et al.: Renal thrombotic microangiopathy and podocytopathy associated with the use of carfilzomib in a patient with multiple myeloma. *BMC Nephrology* 2014 **15**:156.

Submit your next manuscript to BioMed Central and take full advantage of:

- Convenient online submission
- Thorough peer review
- No space constraints or color figure charges
- Immediate publication on acceptance
- Inclusion in PubMed, CAS, Scopus and Google Scholar
- Research which is freely available for redistribution

Submit your manuscript at
www.biomedcentral.com/submit

