


RESEARCH ARTICLE

Open Access



Renal outcomes of STOP-IgAN trial patients in relation to baseline histology (MEST-C scores)

Judith Isabel Schimpf^{1†}, Till Klein^{1,2†}, Christina Fitzner³, Frank Eitner⁴, Stefan Porubsky^{5,6}, Ralf-Dieter Hilgers³, Jürgen Floege¹, Hermann-Josef Groene⁵ and Thomas Rauen^{1*} 

Abstract

Background: The Oxford classification of IgA nephropathy (IgAN) defines histologic criteria (MEST-C) that provide prognostic information based on the kidney biopsy. There are few data on the predictive impact of this classification in randomized clinical trial settings.

Methods: We performed an exploratory analysis of MEST-C scores in 70 available renal biopsies from 162 randomized STOP-IgAN trial participants and correlated the results with clinical outcomes. Analyses were performed by researchers blinded to the clinical outcome of the patients. Biopsies had been obtained 6.5 to 95 (median 9.4) months prior to randomization.

Results: Mesangial hypercellularity (M1) associated with higher annual eGFR-loss during the 3-year trial (M1: -5.06 ± 5.17 ml/min/1.73 m², M0: -0.79 ± 4.50 ml/min/1.73 m², $p = 0.002$). An M0-score additionally showed a weak association with full clinical remission, whereas the percentage of patients losing ≥ 15 ml/min/1.73 m² over the 3-year trial phase was higher among those scored as M1. Among patients with additional immunosuppression, ESRD occurred more frequently in patients when tubulointerstitial fibrosis (T1/2) was present (T1/2 = 33%, T0 = 0%, $p = 0.008$). In patients receiving supportive care only, ESRD frequencies were similar (T1/2 = 18%, T0 = 7%, $p = 0.603$). At randomization, eGFR was significantly lower when tubulointerstitial fibrosis was present (T1/2: 45.2 ± 15.7 ml/min/1.73 m², T0: 74.6 ± 28.2 ml/min/1.73 m², $p < 0.0001$). Endocapillary hypercellularity (E), and glomerular segmental sclerosis (S) were not associated with any clinical outcome parameter. In the analyzed cohort, patients with glomerular crescents (C1/2 scores) in their biopsies were more likely to develop ESRD during the 3-year trial phase, but this trend was only significant in patients under supportive care.

Conclusions: This secondary analysis of STOP-IgAN biopsies indicates that M1, T1/2 and C1/2 scores associate with worse renal outcomes.

Keywords: IgA nephropathy, IgAN, MEST-C, Oxford classification, STOP-IgAN

Background

IgA nephropathy (IgAN) is the most common form of primary glomerulonephritis, presenting with a wide range of clinical features, pathological findings and variable progression of disease [1, 2]. In 2009, the Oxford classification, based on pathological characteristics in

IgAN renal biopsies, was introduced to improve individual risk prediction for disease progression. Mesangial hypercellularity (M), endocapillary proliferation (E), segmental glomerulosclerosis or adhesions (S), tubular atrophy and interstitial fibrosis (T) were identified as significant variables predicting renal outcome independent of clinical features [3, 4]. Numerous retrospective analyses aimed to validate these parameters and assessed their predictivity [5–13]. However, these studies did not provide concordant results. Whereas the T-score is consistently accepted as a parameter with high prognostic

* Correspondence: trauen@ukaachen.de

[†]Judith Isabel Schimpf and Till Klein contributed equally to this work.

¹Division of Nephrology and Clinical Immunology, RWTH Aachen University, Pauwelsstr. 30, 52074 Aachen, Germany

Full list of author information is available at the end of the article



relevance, the predictive value of M, E and S lesions remains controversial, which might be largely due to differences in patient selection criteria, treatment and outcome measures as well as inter-investigator variability in biopsy assessment [14]. Nonetheless, combination of MEST scores with clinical data at the time of biopsy, i.e. renal function, the degree of proteinuria and arterial hypertension, provided a comparable predictive power as monitoring clinical data over a 2-year period [15]. In 2017, the presence of glomerular crescents (C) was added as a fifth parameter to the revised Oxford classification [16], mainly based on a multicentric analysis of more than 3000 IgAN patients [17].

Despite the continuous improvement in histological characterization and tools to predict disease progression in IgAN patients, optimal therapeutic management on IgAN remains a matter of ongoing debate. There is widely accepted consensus on the essential role of blood pressure and proteinuria control using renin-angiotensin system (RAS) blocking agents. A number of recent randomized clinical trials investigated whether systemic or local immunosuppression on top of comprehensive supportive measures, particularly in patients at risk for a progressive disease course, provides further renal benefits [18–20]. Of note, none of these studies used histologic criteria for trial eligibility and/or patient stratification. Among these trials, STOP-IgAN was the first to evaluate the value of additional systemic immunosuppression in IgAN patients with optimized supportive care. The trial was initiated in 2006, when the Oxford classification was not yet published, and applied a novel, two-phase study design in which 379 patients with biopsy-proven IgAN were enrolled into a 6 months run-in phase of optimizing supportive care measures in accordance with the current KDIGO guidelines [21]. Subsequently, a homogenous high-risk group of 162 patients with persistent proteinuria above 0.75 g/day despite optimized supportive care was randomized to either continue on supportive care (SUP arm) or to receive additional immunosuppression (IMM arm) during a 3-year study phase. Additional immunosuppression induced more full clinical remissions, defined as preserved renal function and proteinuria below 0.2 g/g creatinine at the end of the study phase. However, the overall course of renal function and end-stage renal disease (ESRD) rates were not significantly different between the two arms [20].

Since the Oxford classification of IgAN was introduced in 2009, when our trial had already been initiated, we aimed to collect and re-analyze renal biopsies from randomized STOP-IgAN trial participants using the MEST-C score and to align these criteria with renal outcome data, in particular the two primary end points of the trial, i.e. (1) full remission defined as urinary

protein-creatinine ratio < 0.2 g/g and an eGFR-decrease less than 5 ml/min/1.73m² and (2) an eGFR-loss \geq 15 ml/min/1.73m² during the trial phase.

Methods

Study design

The study protocol and results of STOP-IgAN have been published previously [20, 22]. Briefly, all eligible patients with biopsy-proven IgAN ($n = 337$) entered a 6-months run-in phase with comprehensive optimization of supportive treatment measures. One-hundred-sixty-two patients at high risk for disease progression (i.e. those with a persistent proteinuria > 0.75 g/d, but less than 3.5 g/d, despite optimized supportive care) were then randomized into the following 3-year trial phase and were assigned to either continue on supportive therapy alone or to receive additional immunosuppression.

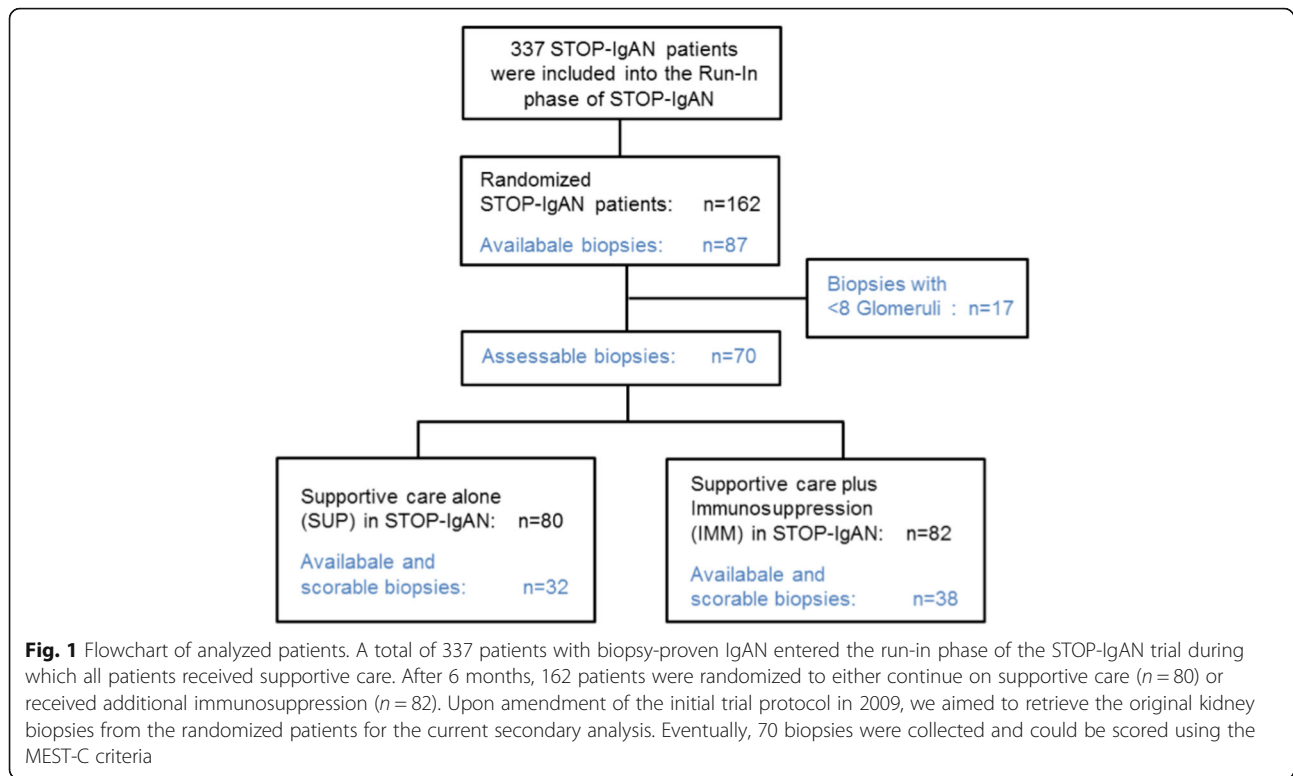
The Oxford classification of IgAN was introduced in 2009, when the STOP-IgAN trial had already been initiated. Thus, the original trial protocol was amended in 2009 and allowed to retrieve all available original renal biopsies from randomized trial participants. Written informed consent for re-assessment of available kidney biopsies was obtained from all patients included in this secondary substudy.

Study population

This secondary analysis reports data from 87 of the original 162 randomized trial patients. Seventeen biopsies showed less than 8 glomeruli and thus could not be assessed based on the MEST-C criteria. Thirty-two of the remaining 70 patients received supportive care (SUP arm) and 38 patients received immunosuppression in addition to supportive care (IMM arm) during the 3-year study phase (Fig. 1).

Microscopic analyses

Before enrollment into the STOP-IgAN trial, all patients underwent renal biopsy that was analyzed by a nephropathologist (H.J.G. or one of the pathologists listed in the Acknowledgements). Because of the heterogeneity of the pathology criteria and the high inter-individual examiner bias described in the original publication of the Oxford MEST classification [4], for the present secondary analysis pathology scoring was performed by only one examiner (T.K.), who had been trained and who was subsequently supervised through random control of achieved results obtained from 20 biopsies (i.e. 29% of all biopsies) by two experienced nephropathologists (H.J.G. and S.P.). Concordance rate between MEST-C scoring through T.K. and the one obtained by H.J.G. and S.P. was > 90%. T.K. was blinded to clinical data and previous nephropathologists' reports. Available renal biopsies were retrieved and analyzed in 2011



according to the current Oxford classification of IgAN using the MEST-C criteria [16]. MEST-C criteria consisted of mesangial hypercellularity (M0: < 50% of glomeruli showing hypercellularity; M1: > 50% of glomeruli showing hypercellularity), endocapillary hypercellularity (E0: absent; E1: present when 3 capillary tubes in two glomeruli showed endocapillary hypercellularity), segmental glomerulosclerosis (S0: absent; S1: present) and tubular atrophy, interstitial fibrosis or interstitial inflammation (T0:< 25%; T1: 25–50%; T2:> 50% of cortical area involved).

The original Oxford classification study as well as the previous validation studies assessed the T-score by visual estimation of the percentage of cortical area involved. Based on these investigations, the T-score is consistently accepted as a histological lesion referring to high prognostic significance [10]. In this study, we used a virtual microscope tool (MIRAX Viewer) to encircle the pathologic lesions in the cortical area and then putting it in relation to the entire cortical area. Thus, we intended to improve the validity of the T-score and to reduce the inter-individual and intra-individual examiner variation to a minimum (Fig. 2).

Crescents were not yet part of the original Oxford classification in 2009 since their prognostic relevance was uncertain at that time, however it was already suggested to also add this information to the biopsy reports. Crescents were then officially introduced in the latest

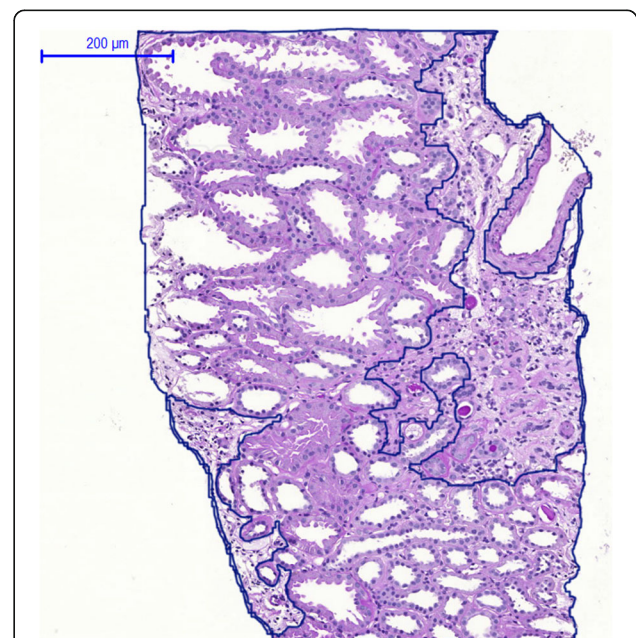


Fig. 2 Quantitative morphometry of the T-score in kidney biopsies. In contrast to semiquantitative analyses of tubular atrophy and interstitial fibrosis (T-score) in previous validation studies of the Oxford MEST-C classification, we assessed the T-score of by quantitative morphometry of the tubulointerstitial area using a virtual microscope tool (MIRAX Viewer). The pathologic lesions in the cortical area were encircled and then put in relation to the entire cortical area

update of the IgA Nephropathy Classification Working Group [16]. In a prescient fashion, the presence of cellular and fibrocellular crescents was also noted and evaluated in our analyses (C0: no crescents, C1: crescents in < 25% of glomeruli, C2: crescents in > 25% of glomeruli).

Statistical analysis

Data are presented as means \pm standard deviations for continuous variables and as counts percentages. Association between MEST-C scores and continuous parameters are analyzed by Satterthwaite t-test. MEST-C scores and binary parameters are analyzed by *Fisher's exact* tests. The statistical test results are reported by *p*-values. Because of the small sample size, we conducted an explorative statistical analysis only. Consequently, the term "significance" was not used in the statistical confirmatory meaning (by comparison with a significance level). Furthermore, association of selected exploratory variables to renal outcome was evaluated by bivariate analyses (t-test and *Fisher's exact* test) assuming no confounding factors. Occurrence of the two primary STOP-IgAN endpoints (i.e. achievement of full clinical remission and eGFR-loss ≥ 15 ml/min/1.73 m²) and ESRD was analyzed and visualized by Kaplan-Meier curves using the time of randomization as the starting point. Survival analyses

using uni- and multivariate Cox regression (adjusting for GFR and proteinuria at baseline and the treatment arm) were performed as sensitivity analyses to assess the interrelationship between individual MEST scores and these endpoints. For the C-score, Cox regression was not justified since the proportional hazards assumption was not met here. Statistical analyses were performed with SAS (Version 9.4, SAS Institute Inc., Cary, NC, USA).

Results

Baseline characteristics of biopsied patients

Among the 162 randomized patients entering the 3-year trial phase, we obtained 87 biopsies. Seventeen biopsies contained fewer than 8 glomeruli and therefore could not be analyzed. Seventy biopsies (43%) fulfilled the required quality criteria proposed for performing the Oxford MEST-C scoring. Of these, 32 were from patients randomized to the SUP arm and 38 to the IMM arm (Fig. 1). Demographic and clinical characteristics of this sub-cohort at the time of enrollment (i.e. at the beginning of the 6-month Run-In phase) are outlined in Table 1 and were similar to the entire study cohort [20]. Time between initial biopsies and trial enrollment ranged between from 6.5 to 95 months (median

Table 1 Patient characteristics at the start of the run-in phase and patients with primary endpoints at the end of the 3-year trial phase

	All (SUP + IMM) (N = 70)	Supportive Care (SUP) (N = 32)	Supportive Care plus Immunosuppression (IMM) (N = 38)
Patient characteristics:			
Female sex -%	17	13	21
Smoker -%	19	19	18
Age -yr	43.4 \pm 13.6	48.2 \pm 10.8	39.3 \pm 14.5
Body-mass index	28.0 \pm 5.0	29.0 \pm 4.8	27.3 \pm 5.1
Blood pressure- mmHg			
Systolic	131 \pm 14	135 \pm 16	127 \pm 12
Diastolic	82 \pm 11	86 \pm 11	79 \pm 10
Serum creatinine -mg/dl	1.4 \pm 0.5	1.5 \pm 0.5	1.3 \pm 0.5
eGFR-ml/min/1.73m ²	67 \pm 28	61 \pm 25	73 \pm 30
Creatinine clearance - ml/min	82 \pm 34 (N = 60)	80 \pm 30 (N = 28)	84 \pm 37 (N = 32)
Daily urinary protein excretion - g/day	2.3 \pm 1.3	2.4 \pm 1.3	2.2 \pm 1.3
Urinary protein-creatinine ratio - g/g	1.4 \pm 0.8 (N = 60)	1.4 \pm 0.8 (N = 28)	1.4 \pm 0.8 (N = 32)
Cholesterol - mg/dl	210 \pm 44 (N = 67)	208 \pm 37 (N = 29)	211 \pm 48 (N = 38)
Primary endpoints:			
Full clinical remission ^a	8	2	6
eGFR-loss ≥ 15 ml/min	23	11	12
ESRD ^b	8	4	4

^aurinary protein-creatinine ratio < 0.2 g/g and an eGFR decrease of < 5 ml/min/1.73m²

^bend-stage renal disease

9.4 months), however only 6% of patients were biopsied more than 3 years before trial enrollment.

Pathology score distribution

Among the randomized patients followed through the 3-year trial phase, 26% had diffuse mesangial hypercellularity (M1), 17% endocapillary hypercellularity (E1), 91% segmental glomerulosclerosis (S1) and 41% tubular atrophy and interstitial fibrosis (T1/T2). Consistent with the VALIGA cohort [6] T2 lesions were rare (only in 4% of analyzed patients), therefore T1 and T2 lesions were combined to facilitate subsequent statistical analyses. The same procedure was applied to the glomerular crescent scores C1 and C2 (only 7% had a C2-score), resulting in 31% of biopsies showing crescents (C1/C2) (Table 2).

Within the analyzed sub-cohort baseline eGFR was significantly lower in patients with T1/T2 scores as compared to those with a T0-score (T1/2: 45 ± 16 ml/min/1.73 m² vs. T0: 75 ± 28 ml/min/1.73 m², $p < 0.0001$; Table 3). Mean baseline proteinuria levels did not differ between the T0 and the T1/2 group. Moreover, no obvious differences in eGFR, occurrence of microhematuria and proteinuria were observed in the M, S, E and C categories.

Association between MEST-C scores and clinical outcome data

Patients with an M1-score had fewer full clinical remissions (M1: 0% vs. M0: 17%, $p = 0.099$; Table 4) and a

Table 3 Association between MEST-C score and baseline eGFR in STOP-IgAN patients

	Mean eGFR ^{a,b}	<i>p</i> -value
Mesangial hypercellularity		0.674
M0	62 ± 26	
M1	65 ± 34	
Endocapillary hypercellularity		0.308
E0	64 ± 27	
E1	53 ± 34	
Segmental glomerulosclerosis		0.422
S0	74 ± 34	
S1	61 ± 27	
Tubular atrophy/Interstitial fibrosis		< 0.0001
T0	75 ± 28	
T1/2	45 ± 16	
Crescents		0.815
C0	62 ± 29	
C1/2	64 ± 25	

^aend of the 6-month run-in phase

^b ml/min/1.73m²

higher incidence of eGFR-loss ≥ 15 ml/min/1.73m² during the trial phase (M1: 50% vs. M0: 27%, $p = 0.092$), yet these trends did not reach the level of statistical significance. There were no differences in remission rates between individuals in the different study arms, neither in patients under supportive care (M1: 0%, M0: 9%, $p = 1.0$,

Table 2 MEST-C score distribution in STOP-IgAN patients

	All (SUP + IMM) (N = 70)	Supportive Care (SUP) (N = 32)	Supportive Care plus Immunosuppression (IMM) (N = 38)
Mesangial hypercellularity			
M0	52 (74%)	24 (75%)	28 (74%)
M1	18 (26%)	8 (25%)	10 (26%)
Endocapillary hypercellularity			
E0	58 (83%)	27 (84%)	31 (82%)
E1	12 (17%)	5 (16%)	7 (18%)
Segmental glomerulosclerosis			
S0	6 (9%)	3 (9%)	3 (8%)
S1	64 (91%)	29 (91%)	35 (92%)
Tubular atrophy/Interstitial fibrosis			
T0	41 (59%)	15 (47%)	26 (68%)
T1	26 (37%)	17 (53%)	9 (24%)
T2	3 (4%)	0 (0%)	3 (8%)
Crescents			
C0	48 (69%)	24 (75%)	24 (63%)
C1	17 (24%)	7 (22%)	10 (26%)
C2	5 (7%)	1 (3%)	4 (11%)

Table 4 Association between M-, T- and C- scores and clinical outcome in STOP-IgAN patients (available cases analysis)

	M0 events/ total	M1 events/ total	<i>p</i> - value	T0 events/ total	T1/2 events/ total	<i>p</i> - value	C0 events/ total	C1/2 events/ total	<i>p</i> - value
Full clinical remission ^a	8/48 (17%)	0/17 (0%)	0.099	6/39 (15%)	2/26 (8%)	0.460	4/45 (9%)	4/20 (20%)	0.238
GFR-loss ≥ 15 ml/min	14/51 (27%)	9/18 (50%)	0.092	11/40 (28%)	12/29 (41%)	0.302	16/47 (34%)	7/22 (32%)	1.000
ESRD ^b	7/51 (14%)	1/18 (6%)	0.671	1/40 (3%)	7/29 (24%)	0.008	4/47 (9%)	4/22 (18%)	0.255
Disappearance of microhematuria	11/34 (32%)	3/15 (20%)	<i>n.d.</i> ^c	10/29 (35%)	4/20 (20%)	<i>n.d.</i> ^c	10/34 (29%)	4/15 (27%)	1.000
Absolute annual GFR change (ml/min/1.73m ²)	-0.79 \pm 4.50	-5.06 \pm 5.17	0.002	-2.05 \pm 5.40	-2.01 \pm 4.54	0.362	-2.66 \pm 5.02	-0.82 \pm 5.02	0.131

^aurinary protein-creatinine ratio < 0.2 g/g and an eGFR decrease of < 5 ml/min/1.73m²

^bend-stage renal disease

^cnot determined (due to the low total numbers of available data points in this category, *n* = 49)

Table 5), nor in patients under additional immunosuppression (M1: 0%, M0: 23%, *p* = 0.304, Table 5). Mean annual GFR loss was significantly higher for patients in the M1 group than for those in the M0 group (M0: -0.79 \pm 4.50 ml/min/1.73 m² vs. M1 -5.06 \pm 5.17 ml/min/1.73 m², *p* = 0.002).

In our cohort, T1/2-scores did not correlate with full clinical remission or eGFR-loss rates during the trial phase, however, T1/2 was significantly associated with ESRD development (T1/2: 24% vs. T0: 3%, *p* = 0.008). This association was exclusively observed in patients under additional immunosuppression (T1/2: 44% vs. T0: 0%, *p* = 0.008), but not among those under supportive treatment (T1/2: 18% vs. T0: 7%, *p* = 0.603). Mean baseline eGFR in the four patients under additional immunosuppression with an T1/2 score who developed ESRD was 47 \pm 15 ml/min/1.73 m² and among the three patients with an T1/2 in the supportive care group 51 \pm 8 ml/min/1.73 m². Urinary protein-creatinine ratios did not differ between these subcohorts (1,7 \pm 0,8 g/g for both).

ESRD occurred more frequently in patients with glomerular crescents (C1/C2) than in patients with a C0-score (C1/2: 18% vs. C0: 9%, *p* = 0.255), whereas this trend was only significant in patients receiving supportive therapy (C1/2: 38% vs. C0: 4%, *p* = 0.039, Table 5). Accordingly, eGFR-loss rates of at least 15 ml/min/1.73m² did not correlate with crescents in patients

receiving supportive therapy (C1/2: 63% vs. C0: 25%, *p* = 0.088) nor in those receiving additional immunosuppression (C1/2: 15% vs. C0: 43%, *p* = 0.084, Table 5). Occurrence of primary trial endpoints (full clinical remission and eGFR-loss ≥ 15 ml/min/1.73m²) and ESRD over the 3-year trial phase in the individual MEST-C subgroups was also visualized in Kaplan-Meier curves (Figs. 3, 4 and 5). Sensitivity analyses including uni- and multivariate Cox regression analyses entirely confirmed the previous trends for the MEST criteria as the only significant association in our cohort was observed for the T-score and ESRD development (*p* = 0.02 in the univariate Cox regression model; *p* = 0.01 in the multivariate Cox regression adjusting for GFR and proteinuria at baseline and the treatment arm).

Endocapillary hypercellularity (E) and segmental glomerular sclerosis (S) did not correlate with any of the other analyzed clinical outcome parameters. Disappearance of microhematuria did not correlate with any of the MEST-C criteria.

In our cohort, thrombotic microangiopathy (TMA) lesions were screened in randomly selected biopsies and were observed in only 2–4% of biopsies at maximum.

Discussion

All randomized clinical trials (RCTs) that evaluated therapeutic strategies in IgAN patients, of course

Table 5 Association between M-, T- and C- scores and clinical outcome in the two treatment arms of the STOP-IgAN trial (available cases analysis)

		M0 events/ total	M1 events/ total	T0 events/ total	T1/2 events/ total	C0 events/ total	C1/2 events/ total
Full clinical remission ^a	SUP ^c	2/22 (9%)	0/8 (0%)	2/15 (13%)	0/15 (0%)	1/23 (4%)	1/7 (14%)
	IMM ^d	6/26 (23%)	0/9 (0%)	4/24 (17%)	2/11 (18%)	3/22 (14%)	3/13 (23%)
GFR-loss ≥ 15 ml/min	SUP	7/24 (29%)	4/8 (50%)	4/15 (27%)	7/17 (41%)	6/24 (25%)	5/8 (63%)
	IMM	7/27 (26%)	5/10 (50%)	7/25 (28%)	5/12 (42%)	10/23 (43%)	2/14 (15%)
ESRD ^b	SUP	3/24 (13%)	1/8 (13%)	1/15 (7%)	3/17 (18%)	1/24 (4%)	3/8 (38%)
	IMM	4/27 (15%)	0/10 (0%)	0/25 (0%)	4/12 (33%)	3/23 (13%)	1/14 (7%)

^aurinary protein-creatinine ratio < 0.2 g/g and an eGFR decrease of < 5 ml/min/1.73m²

^bend-stage renal disease

^cpatients under supportive treatment during the 3-year trial phase

^dpatients under additional immunosuppression during the 3-year trial phase

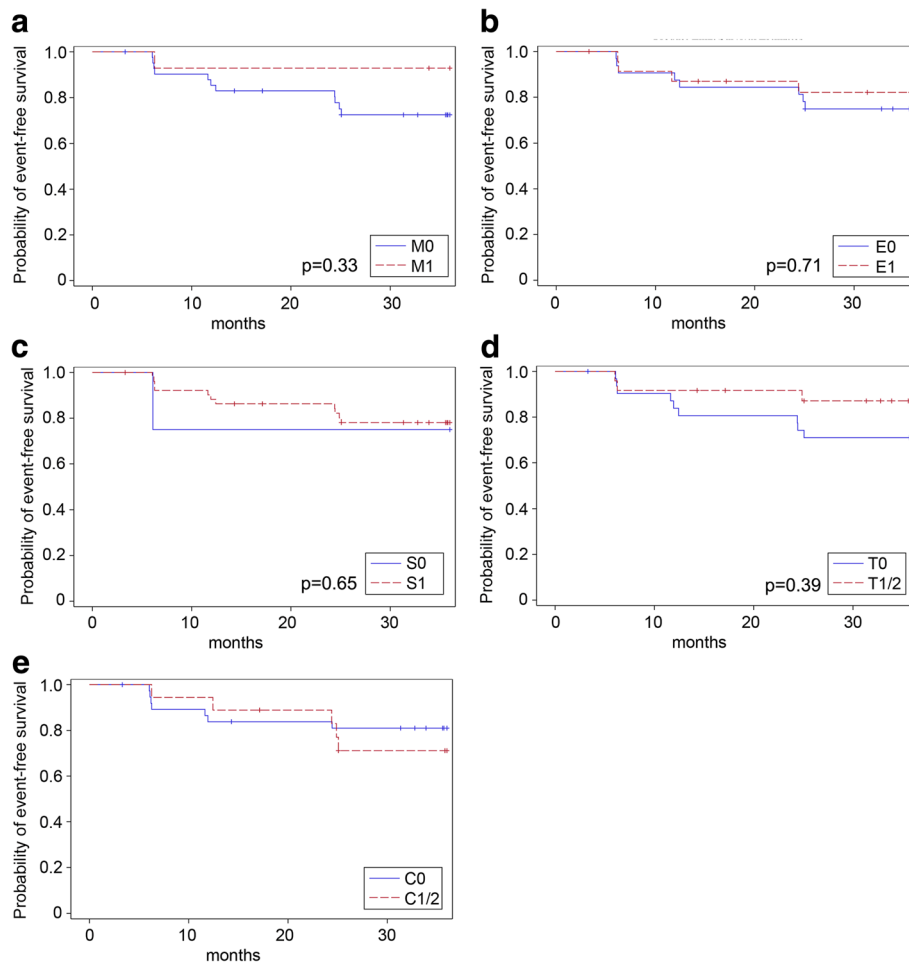


Fig. 3 Kaplan-Meier curves for the event “full clinical remission” based on the M-score (a), E-score (b), S-score (c), T-score (d) and C-score (e). Full clinical remission was defined as urinary protein-creatinine ratio < 0.2 g/g and an eGFR decrease of < 5 ml/min/1.73m². Univariate Cox regression yielded the following *p*-values: M-score: *p* = 0.41; E-score: *p* = 0.46; S-score: *p* = 0.38; T-score: *p* = 0.39. Multivariate Cox regression adjusting for GFR and proteinuria at baseline and the treatment arm yielded the following *p*-values (also given in the figure): M-score: *p* = 0.33; E-score: *p* = 0.71; S-score: *p* = 0.65; T-score: *p* = 0.39. For the C-score, the proportional hazard assumption was not met

required a renal biopsy as an eligibility criterion to confirm the diagnosis of IgAN. However, none of these trials, including the most recent ones [18–20], applied pre-defined histological features such as the MEST-C parameters for patient selection or stratification nor did these trials prospectively analyze renal outcomes in individual histological subgroups. In this regard, STOP-IgAN is no exception which is not surprising since the first version of the Oxford classification was published when STOP-IgAN was already recruiting patients [3, 4].

Here, we present an exploratory analysis from a representative STOP-IgAN subcohort [20] that includes 43% of randomized patients with available and sufficient biopsies that were scored based on the current MEST-C classification.

Baseline eGFR was significantly lower in patients with T1/2 scores as compared to those with T0. This is not

surprising since tubular atrophy and interstitial fibrosis are hallmark features of irreversible kidney damage and markers of advanced stages of renal disease regardless of the underlying pathology. Our data confirm older studies that tubulointerstitial damage in IgAN exhibits a very close association with renal function [23]. Retrospective data from the European VALIGA cohort that included more than 1100 IgAN patients suggested that the T-score was consistently predictive for poor renal outcomes, also in patients with a baseline GFR below 30 ml/min/1.73m² [6]. Notably, patients with such low renal function at enrollment had been excluded in STOP-IgAN and other randomized controlled trials. A large cohort of Korean IgAN patients also exhibited a significant correlation between T-scores and eGFR at the time of the biopsy [8]. In line with this, STOP-IgAN patients with biopsies showing T1/2 scores had a lower

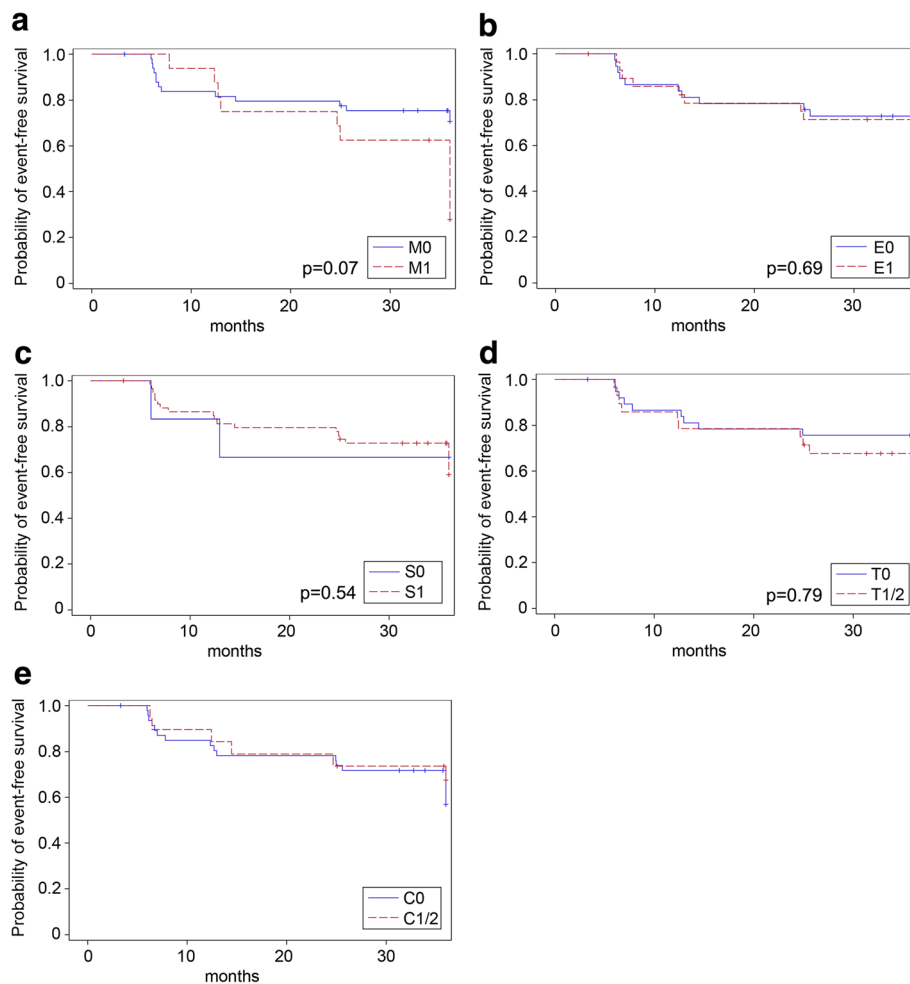


Fig. 4 Kaplan-Meier curves for the event “eGFR-loss ≥ 15 ml/min/1.73 m²” based on the M-score (a), E-score (b), S-score (c), T-score (d) and C-score (e). Univariate Cox regression yielded the following *p*-values: M-score: *p* = 0.08; E-score: *p* = 0.41; S-score: *p* = 0.91; T-score: *p* = 0.15. Multivariate Cox regression adjusting for GFR and proteinuria at baseline and the treatment arm yielded the following *p*-values (also given in the figure): M-score: *p* = 0.07; E-score: *p* = 0.69; S-score: *p* = 0.54; T-score: *p* = 0.79). For the C-score, the proportional hazard assumption was not met

mean baseline eGFR as compared to the the whole study cohort and were more likely to progress to end-stage renal disease (ESRD). Subgroup-analyses showed that T1/2-scores were only predictive for ESRD among patients who received additional immunosuppression and not in those under supportive care albeit only eight patients in the present subcohort (11%) developed ESRD (four patients in each treatment arm). Although the present secondary analysis only included 70 IgAN patients, it is worth noting that unlike many preceding clinical trials, all STOP-IgAN patients received RAS-blocking agents in a standardized fashion [20], i.e. dose titration based on proteinuria and blood pressure levels. To our knowledge, the current analysis from the STOP-IgAN cohort is the first one suggesting a potential interaction between tubular atrophy/interstitial fibrosis and immunosuppression. Lv et al. had pooled renal outcome data from 16 retrospective cohort studies

comprising more than 3800 IgAN patients and found that the presence of a T1/2 score heralded an increased risk for ESRD development (HR 3.2; 95%-CI 1.8–5.6; *p* < 0.001) [10]. In general, T-scoring has proven to be a valuable predictor in nearly all validation studies [14].

In contrast, the predictive impact of endocapillary hypercellularity (E-score) is a matter of ongoing debate. In the above cited VALIGA cohort, the E-score was not predictive in the entire population or various subgroups [6]. Similar results were reported in the meta-analysis of Lv et al. [10]. However, other studies suggested that endocapillary lesions might respond to immunosuppressive therapy: a subgroup analysis from the original Oxford classification study revealed that the annual GFR-loss was significantly higher in patients scored as E1 as compared to those with E0, however only in patients without immunosuppression and not among those receiving immunosuppression [3]. Along these lines, a

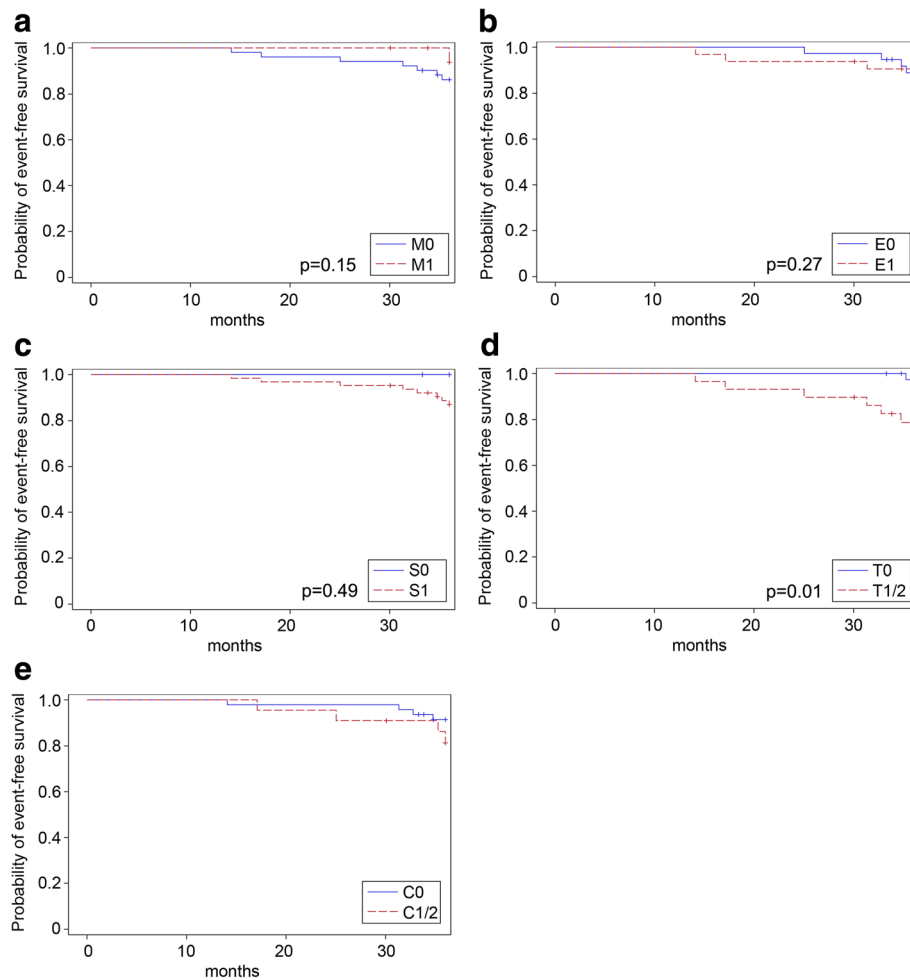


Fig. 5 Kaplan-Meier curves for the event “ESRD development” based on the M-score (a), E-score (b), S-Score (c), T-score (d) and C-score (e). Univariate Cox regression yielded the following *p*-values: M-score: *p* = 0.32; E-score: *p* = 0.96; S-score: *p* = 0.90; T-score: *p* = 0.02. Multivariate Cox regression adjusting for GFR and proteinuria at baseline and the treatment arm yielded the following *p*-values (also given in the figure): M-score: *p* = 0.15; E-score: *p* = 0.27; S-score: *p* = 0.49; T-score: *p* = 0.01). For the C-score, the proportional hazard assumption was not met

recently published, single-center study confirmed an E1-score as an independent predictor for ESRD in patients who did not receive immunosuppression [24]. In contrast to these studies, in STOP IgAN patients E-scoring did not predict any measured outcome.

Mesangial hypercellularity (M-score) is considered a very sensitive pathology marker in predicting disease progression [6, 25]. In accordance with the VALIGA cohort [6], STOP-IgAN patients with an M1-score had a significantly higher annual loss of renal function than patients scored as M0. However, M-scoring did not show a significant association with the percentage of patients losing > 15 ml/min/1.73 m² of GFR and ESRD occurrence. The reason for this might relate to the limited observation time of 3 years only and the overall low number of ESRD events in the analyzed subcohort. Furthermore, the predictive value of M-scoring might be abandoned if patients receive immunosuppressive

therapy [6] and indeed in our subgroup of immunosuppressed STOP-IgAN patients (IMM arm), the M-score was not validated as an independent risk factor. Previous cohort analyses suggest that in IgAN patients at more advanced disease stages M-scoring is no longer predictive [5, 7]. Further studies are needed to evaluate the relationship between supportive and/or immunosuppressive therapy and mesangial hypercellularity as a disease predictor.

Crescents have been introduced as the C-score only very recently in the revised Oxford classification [16]. This was based on several observations from smaller studies and a large IgAN cohort pooled from four previous analyses [17]. The latter found that patients with glomeruli containing crescents had a worse renal outcome than those without crescents. In the STOP-IgAN subcohort, analyzed patients displaying glomerular crescents in their biopsies were more likely to lose at least

15 ml/min/1.73m² of GFR or to develop ESRD during the 3-year trial phase. This trend was only significant among patients under supportive care and not in those under additional immunosuppression. This might indicate that the cellular proliferative component in the extracapillary space is responsive to immunosuppressive therapy [17, 26]. Whether in fact immunosuppression has beneficial effects on active crescentic lesions and results in subsequent GFR improvement is an intriguing hypothesis that needs to be evaluated in future studies.

We did not find evidence for frequent thrombotic microangiopathy (TMA) lesions in the biopsies from our STOP-IgAN subcohort. At maximum, we observed 2–4% TMA lesions in our patients contrasting data from a French single-center study reporting >50% of such lesions [27], however our findings are consistent with data from other cohorts [28].

Compared to numerous preceding studies that aimed to validate the original Oxford classification, our study has several strengths. First, we applied a novel morphometric tool to more reliably quantify the degree of tubulointerstitial damage. The original Oxford Classification study as well as the subsequent validation studies only assessed the T-score by rough visual estimation of the involved cortical area [3, 4, 16]. Given its high prognostic significance on renal outcome, our approach might help to improve the validity of the T-score and minimize the inter- and intra-individual examiner variation. Furthermore, to our knowledge, this is the first validation study assessing all five parameters of the updated Oxford classification of IgAN including the presence of crescents in a prospective clinical trial.

Limitations of this secondary analysis include its *post-hoc* character and the variable intervals between time point of kidney biopsy and study enrollment (between 6.5 and 95 months), however only 6% of the biopsies were performed more than 3 years before trial enrollment. It might well be that with progressing disease course between kidney biopsy and trial enrollment, active renal lesions such as E- or C-lesions might transform into more chronic pathological manifestations. Thus, our study bares a certain “observational gap” between the actual biopsy and the time of trial inclusion. However, given the overall very slow annual decline of renal function, even in IgAN patients under supportive therapy only (approx. −1,5 ml/min/1.73m² per year), we consider this relatively short median time span of 9.4 months not relevant with respect to the chosen renal outcome parameters. Since the original Oxford classification was published in 2009, when STOP-IgAN was already recruiting patients, these histopathological characteristics were not “state of the art” at the time of enrollment and had to be obtained *ex post*. However, the histological analyses described here were performed

blindly with regard to clinical trial data. Nowadays, IgAN kidney biopsies are reported based on the updated Oxford criteria in a standardized fashion [16]. The number of kidney biopsies to which the current MEST-C criteria were applicable was limited to 43% of randomized STOP-IgAN patients. Unfortunately, it was not feasible to obtain biopsies from all randomized patients, in part, because in the STOP-IgAN trial protocol, original biopsies were not requested to be delivered to the central trial coordinator. However, with regard to baseline renal function, proteinuria and other major patient characteristics the analyzed subcohort was representative for the entire STOP-IgAN population [20]. Nevertheless, given this sample size our *post-hoc* analysis was not sufficiently powered to determine interrelationships between histopathological scores and treatment effects. Moreover, because of the small sample size, we conducted an explorative statistical analysis only.

Conclusions

We applied the current Oxford classification to 70 randomized STOP-IgAN patients, either receiving immunosuppressive or supportive therapy only. Mesangial hypercellularity associated with a more rapid annual decline of eGFR, whereas the degree of tubular atrophy and interstitial fibrosis was predictive for ESRD, particularly in patients under immunosuppressive therapy. Since approximately one third of IgAN patients progresses to ESRD over 20–40 years [29], it is of utmost importance to identify patients early who are at risk for a progressive disease course. M1- as well as T1/2 and C1/C2 scores in the kidney biopsy might serve as valuable parameters to identify such high-risk candidates.

Abbreviations

eGFR: Estimated glomerular filtration rate; ESRD: End-stage renal disease; IgAN: Immunoglobulin A nephropathy; IMM arm: Patients under additional immunosuppression on top of optimized supportive care in the STOP-IgAN trial; KDIGO: Kidney Disease Improving Global Outcomes; MEST-C: (M)esangial hypercellularity, (E)ndocapillary hypercellularity, (S)egmental glomerulosclerosis, (T)ubular atrophy and interstitial fibrosis, (C)rescents; RAS: Renin-angiotensin system; SUP arm: Patients under optimized supportive care in the STOP-IgAN trial; TMA: Thrombotic microangiopathy; VALIGA study: European VALidation Study of the Oxford Classification of IGA Nephropathy

Acknowledgements

We are grateful to all study participants and trials centers for their contribution to this work. We are grateful to K. Amann (Erlangen, Germany), U. Helmchen (Hamburg, Germany), R. Waldherr (Heidelberg, Germany), H. Lobeck (Potsdam, Germany) to provide the original kidney biopsies for the present re-evaluation following the updated Oxford MEST-C classification.

Funding

The STOP-IgAN trial was funded through the German Federal Ministry of Education and Research (GFVT01044604). There was no third-party funding for the current secondary subanalysis.

Availability of data and materials

The datasets used and/or analyzed during the current study are available from the corresponding author on reasonable request.

Authors' contributions

The study was designed by JF, FE, RDH and TR. All biopsies were analyzed by TK who was intensively trained and supervised by HJG and SP. Statistical analyses were performed by JS, CF and RDH. TK wrote the entire manuscript. JS, JF and TR edited the manuscript text. The final manuscript version was approved by all listed authors.

Ethics approval and consent to participate

The original study protocol of STOP-IgAN was amended in 2009 and allowed to retrieve all available original renal biopsies from randomized trial participants. Written informed consent for re-assessment of available kidney biopsies was obtained from all patients included in this secondary substudy. The STOP-IgAN trial as well as the current substudy were approved by the Ethics Committee at the RWTH Aachen University Hospital (reference number 159/07).

Consent for publication

Not applicable.

Competing interests

J. Floege has received consultant honoraria from Omeros, USA and Pharmedica, Sweden, and investigator fees from Anthera Pharmaceuticals Inc., USA. The other authors declare no competing financial interests.

Publisher's Note

Springer Nature remains neutral with regard to jurisdictional claims in published maps and institutional affiliations.

Author details

¹Division of Nephrology and Clinical Immunology, RWTH Aachen University, Pauwelsstr. 30, 52074 Aachen, Germany. ²Department of Intensive Care, RWTH Aachen University, Aachen, Germany. ³Department of Medical Statistics, RWTH Aachen University, Aachen, Germany. ⁴Bayer AG, Wuppertal, Germany. ⁵Cellular and Molecular Pathology, German Cancer Research Center, Heidelberg, Germany. ⁶Institute of Pathology, University Medical Centre Mannheim, Mannheim, Germany.

Received: 21 December 2017 Accepted: 31 October 2018

Published online: 19 November 2018

References

- Barratt J, Feehally J. IgA nephropathy. *J Am Soc Nephrol*. 2005;16:2088–97.
- Wyatt RJ, Julian BA. IgA nephropathy. *N Engl J Med*. 2013;368:2402–14.
- Cattran DC, Coppo R, Cook HT, Feehally J, Roberts IS, Troyanov S, et al. The Oxford classification of IgA nephropathy: rationale, clinicopathological correlations, and classification. *Kidney Int*. 2009;76:534–45.
- Roberts IS, Cook HT, Troyanov S, Alpers CE, Amore A, Barratt J, et al. The Oxford classification of IgA nephropathy: pathology definitions, correlations, and reproducibility. *Kidney Int*. 2009;76:546–56.
- Alamartine E, Sauron C, Laurent B, Sury A, Seffert A, Mariat C. The use of the Oxford classification of IgA nephropathy to predict renal survival. *Clin J Am Soc Nephrol*. 2011;6:2384–8.
- Coppo R, Troyanov S, Bellur S, Cattran D, Cook HT, Feehally J, et al. Validation of the Oxford classification of IgA nephropathy in cohorts with different presentations and treatments. *Kidney Int*. 2014;86:828–36.
- Herzenberg AM, Fogo AB, Reich HN, Troyanov S, Bavbek N, Massat AE, et al. Validation of the Oxford classification of IgA nephropathy. *Kidney Int*. 2011;80:310–7.
- Kang SH, Choi SR, Park HS, Lee JY, Sun IO, Hwang HS, et al. The Oxford classification as a predictor of prognosis in patients with IgA nephropathy. *Nephrol Dial Transplant*. 2012;27:252–8.
- Lee H, Yi SH, Seo MS, Hyun JN, Jeon JS, Noh H, et al. Validation of the Oxford classification of IgA nephropathy: a single-center study in Korean adults. *Korean J Intern Med*. 2012;27:293–300.
- Lv J, Shi S, Xu D, Zhang H, Troyanov S, Cattran DC, et al. Evaluation of the Oxford classification of IgA nephropathy: a systematic review and meta-analysis. *Am J Kidney Dis*. 2013;62:891–9.
- Moriyama T, Nakayama K, Iwasaki C, Ochi A, Tsuruta Y, Itabashi M, et al. Severity of nephrotic IgA nephropathy according to the Oxford classification. *Int Urol Nephrol*. 2012;44:1177–84.
- Shi SF, Wang SX, Jiang L, Lv JC, Liu LJ, Chen YQ, et al. Pathologic predictors of renal outcome and therapeutic efficacy in IgA nephropathy: validation of the Oxford classification. *Clin J Am Soc Nephrol*. 2011;6:2175–84.
- Yau T, Korbet SM, Schwartz MM, Cimbaluk DJ. The Oxford classification of IgA nephropathy: a retrospective analysis. *Am J Nephrol*. 2011;34:435–44.
- Roberts IS. Oxford classification of immunoglobulin a nephropathy: an update. *Curr Opin Nephrol Hypertens*. 2013;22:281–6.
- Barbour SJ, Espino-Hernandez G, Reich HN, Coppo R, Roberts IS, Feehally J, et al. The MEST score provides earlier risk prediction in IgA nephropathy. *Kidney Int*. 2016;89(1):167–75.
- Trimarchi H, Barratt J, Cattran DC, Cook HT, Coppo R, Haas M, et al. Oxford classification of IgA nephropathy 2016: an update from the IgA nephropathy classification working group. *Kidney Int*. 2017;91:1014–21.
- Haas M, Verhave JC, Liu ZH, Alpers CE, Barratt J, Becker JU, et al. A multicenter study of the predictive value of crescents in IgA nephropathy. *J Am Soc Nephrol*. 2017;28:691–701.
- Fellstrom BC, Barratt J, Cook H, Coppo R, Feehally J, de Fijter JW, et al. Targeted-release budesonide versus placebo in patients with IgA nephropathy (NEFIGAN): a double-blind, randomised, placebo-controlled phase 2b trial. *Lancet*. 2017;389:2117–27.
- Lv J, Zhang H, Wong MG, Jardine MJ, Hladunewich M, Jha V, et al. Effect of Oral methylprednisolone on clinical outcomes in patients with IgA nephropathy: the TESTING randomized clinical trial. *JAMA*. 2017;318:432–42.
- Rauen T, Eitner F, Fitzner C, Sommerer C, Zeier M, Otte B, et al. Intensive supportive care plus immunosuppression in IgA nephropathy. *N Engl J Med*. 2015;373:2225–36.
- KDIGO Clinical Practice Guideline for Glomerulonephritis. *Kidney Int*. 2012;2(Suppl 2):209–10.
- Eitner F, Ackermann D, Hilgers RD, Floege J. Supportive versus immunosuppressive therapy of progressive IgA nephropathy (STOP) IgAN trial: rationale and study protocol. *J Nephrol*. 2008;21:284–9.
- Vleming LJ, de Fijter JW, Westendorp RG, Daha MR, Bruijn JA, van Es LA. Histomorphometric correlates of renal failure in IgA nephropathy. *Clin Nephrol*. 1998;49:337–44.
- Chakera A, MacEwen C, Bellur SS, Chompuk LO, Lunn D, Roberts IS. Prognostic value of endocapillary hypercellularity in IgA nephropathy patients with no immunosuppression. *J Nephrol*. 2016;29:367–75.
- Reich HN, Troyanov S, Scholey JW, Cattran DC. Remission of proteinuria improves prognosis in IgA nephropathy. *J Am Soc Nephrol*. 2007;18:3177–83.
- Kuppe C, van RC, Leuchtle K, Kabgani N, Vogt M, Van ZM, et al. Investigations of glucocorticoid action in GN. *J Am Soc Nephrol*. 2017;28:1408–20.
- El KK, Hill GS, Karras A, Jacquot C, Moulounguet L, Kourilsky O, et al. A clinicopathologic study of thrombotic microangiopathy in IgA nephropathy. *J Am Soc Nephrol*. 2012;23:137–48.
- Chang A, Kowalewska J, Smith KD, Nicosia RF, Alpers CE. A clinicopathologic study of thrombotic microangiopathy in the setting of IgA nephropathy. *Clin Nephrol*. 2006;66:397–404.
- Lai KN, Tang SC, Schena FP, Novak J, Tomino Y, Fogo AB, et al. IgA nephropathy. *Nat Rev Dis Primers*. 2016;2:16001.

Ready to submit your research? Choose BMC and benefit from:

- fast, convenient online submission
- thorough peer review by experienced researchers in your field
- rapid publication on acceptance
- support for research data, including large and complex data types
- gold Open Access which fosters wider collaboration and increased citations
- maximum visibility for your research: over 100M website views per year

At BMC, research is always in progress.

Learn more biomedcentral.com/submissions

